



RMPS

Primary 3 Parents' Briefing

2 February 2024



All slides will be uploaded on the school's website



01

Principal's Address

School's Direction &
Assessment Matters

03

Academic Heads' Address

Curriculum Matters

02

Year Head's Address

Level Programmes

04

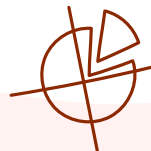
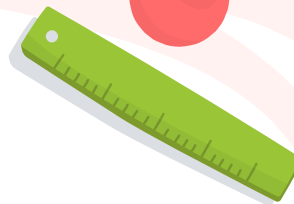
Meeting the Form Teachers

Class Focus & Expectations



01

Principal's Address



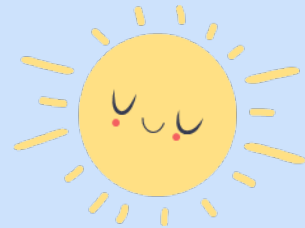
02

Year Head's Address



Expectations

1. Respect and Graciousness: In Words and Actions
2. Punctuality: Be in classroom by 7.40 am
3. Attendance: Every Day Matters



Start Right

- We set clear expectations for students.
- Ask your children about the Start Right rules for classrooms, hallways and recess.





Conduct and Consequences

Follow-up and Consequences

- The school recognises that students are children who are developing their empathy, self - responsibility, and self -discipline.
- Students who commit offences will be held responsible for their actions. Every effort will be taken to educate them, and help them to learn from their mistakes.

Consequences for Serious Offences

- When students commit more serious offences such as cheating, stealing, being openly defiant or fighting, the school can mete out consequences such as detention or suspension.
- Serious offences may also warrant a drop in the student's conduct grade. A student's conduct grade, awarded at the end of each semester. It is a form of recognition for good behaviour, or a reflection of a student's poor behaviour.



Conduct Grade



**Fair
or
poor**

These students will not be eligible for any school-based or national awards (e.g. Eagles, ECHA, Edusave).

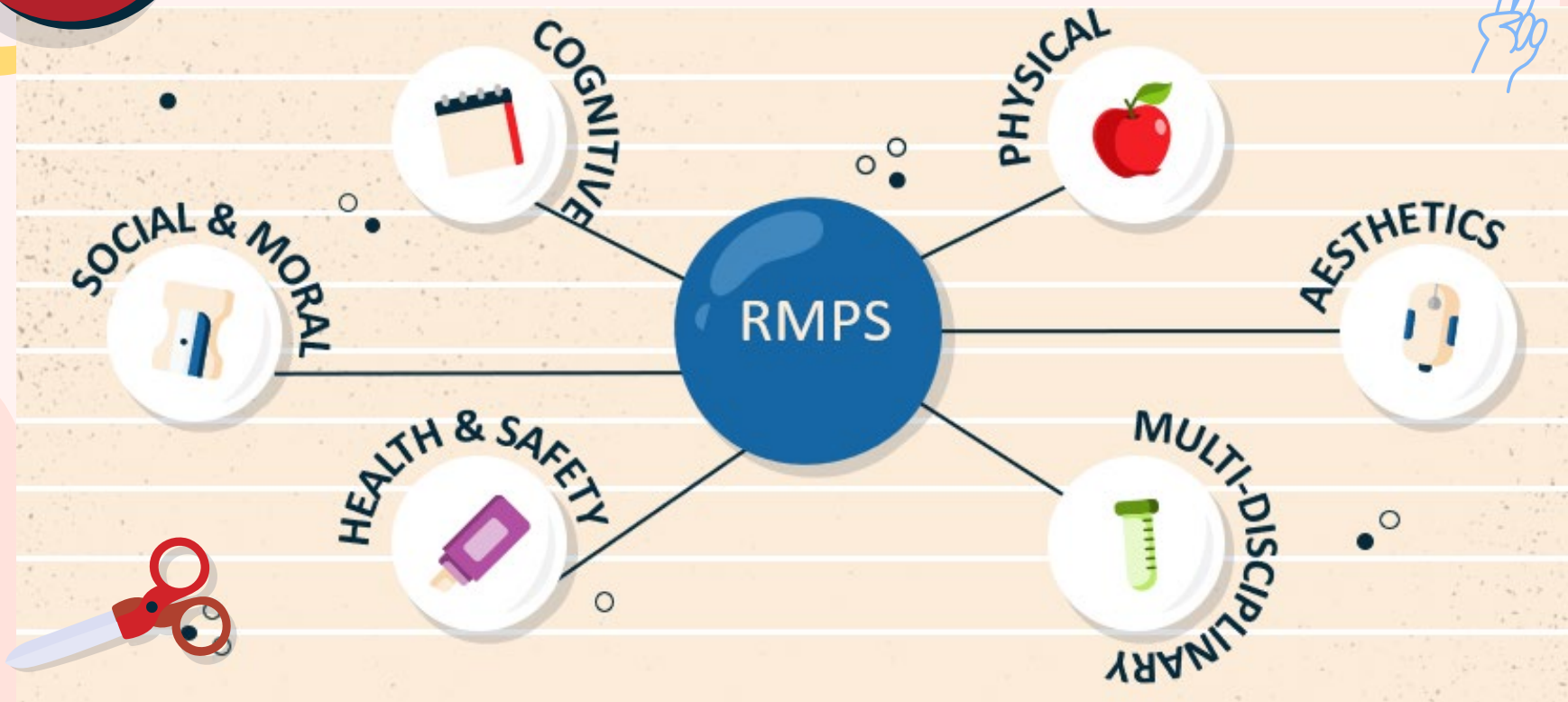
Step down from leadership positions (e.g. Prefect, Class Monitor).

Students with adverse conduct grade may not be considered for DSA.





Holistic Education



Holistic Education

Discover and nurture their strengths and interest, cultivate important values, and realise their potential to seize opportunities of the future



Physical

- Olympic Festival
- P3 Camp
- Modular CCA

Cognitive

- Straight from the Heart
- MTL Fortnight
- MTL Cultural Camp
- Experiential Learning



Social & Moral

- Character Workshop
- Growth Mindset
- Make-a-Mark
- NE Commerations




Aesthetics


- Music– Portable keyboard
- Art – Digital Self-Portrait
- RMPS Got Talent
- Aesthetics Week

Health & Safety

- Road Safety Talks
- Health Talks & Checks
- Fire/ Lockdown Drills

Multi-Disciplinary

- Multi -Disciplinary Project Work (MDPW)
 - STEAM Week
 - Fun with Learning @ RMPS
- 

The background is a light pink color with large, soft, white cloud-like shapes. Various colorful icons are scattered around: a red car at the top, a blue ball on the left, and several interlocking puzzle pieces in red, yellow, blue, and orange. At the bottom, two hands are reaching up; the left hand has a red smiley face on the palm, and the right hand has a red letter 'C' on the palm. The title text is centered within a large white cloud shape.

Primary 3

Key Programmes

Multi-Disciplinary Project Work (MDPW)



Authentic
Learning
Experiences

Creative Thinking
& Collaboration



Communication
Skills

Applied Learning Programme (ALP)



Design Thinking
Process

Computational
Thinking

6- year
Progressive
Programme

P3 Cultural Camp



S.T.E.A.M Week & FUN with Learning Day





(PAM Week)
Arts Festival



Physical & Aesthetics



Olympic Festival



SwimSafer 2.0 Programme





Basic first aid

Teamwork



P3 Camp

Build resilience
and confidence





Modular CCA

CCAs IN RMPS



Sports & Games

- Basketball
- Football
- Floorball
- Rugby
- Table Tennis

Performing & Visual Arts

- Chinese Dance
- Chinese Orchestra
- Choir
- Art & Crafts

Uniformed Group

- Boys Brigade
- Girls Brigade
- Scouts

Clubs

- ELDDS
- Environmental Science
- Infocomm Technology



Social & Moral



Circle Time



Breakfast with Form Teachers

Foster well-being in our students and develop positive relationships through engaging and meaningful conversations.

School-Based Character & Citizenship Education Programmes



Build confidence in students' self-image through building of life skills and Social Emotional Competencies

FriYAY@RMPS



Focus on strengthening bonds and building friendships through play (7.15am to 7.40am)

- Educational games like Chess, Rubik cube, Traffic Rush, Boggle, Scrabble, Othello, Reversi

It takes an entire village to raise a child.... We are all on the SAME SIDE.



Help your child succeed in life

Our children do best when schools and parents work hand in hand to support them. Here are some tips to make this happen...

Work with the school to know and support your child

- Have regular conversations with teachers in both academic and non-academic areas - this will help you better guide your child's development.
- Check the teachers' preferred mode of communication - they are not required to share their mobile numbers.
- Understand that teachers may not be able to respond to your queries immediately.

Help your child relate to others

- Work with the teachers to help your child respect differences and resolve disagreements amicably.
- Let the school verify the facts in any incident before taking action to ensure a fair, objective outcome for all parties.

Help your child develop good habits

- Create a conducive home environment for your child to enjoy reading and to finish his/her homework by himself/herself.
- Encourage your child to live a healthy, balanced life with time for sleep and play.

Help your child manage himself/herself

- Guide your child in managing his/her time.
- Encourage your child to help out with household chores.



Thank you!

Year Head (Middle Primary):
Mdm Wong Pauline (Mrs Toh)

Email Address:
pauline_wong@schools.gov.sg

CREDITS: This presentation template was created by
Slidesgo, including icons by **Flaticon**, and infographics
& images by **Freepik**

Academic Heads' Address



Form Teachers' Session

