

---

# PRINCIPAL'S ADDRESS TO PRIMARY 4 PARENTS/GUARDIANS

17 JANUARY 2020



# AGENDA

- School's Mission, Vision and Values
- The Radin Mas Experience
- Learn for Life Initiatives at Primary 4
- Examinations at Primary 4
- Subject Based Banding
- Snapshot at PSLE 2021

# RADIN MAS VISION

A school where all work hard, play hard and make a mark



# RADIN MAS VISION



## Work Hard

- Holistic Development (Academic & Non Academic)
- Self-Directed Learners
- To always push themselves
- Grit/Resilience



## Play Hard

- Positive school experiences.
- Combination of both structured play and unstructured play
- Build positive ties
- Develop passion, interest and talents



## Make A Mark

- Discovering passion, interests and talents.
- Internalising the school values.
- Strong sense of advocacy.
- A spirit of dare and continuous learning.

## RADIN MAS MISSION

TO DEVELOP EACH  
CHILD  
HOLISTICALLY,  
EQUIPPING HIM  
WITH THE  
COMPETENCIES  
FOR THE FUTURE





# 21<sup>ST</sup> CENTURY COMPETENCIES AND DOE



## KEY SKILLS/VALUES NEEDED

Creativity

Critical Thinking &  
Problem Solving

Dare, Grit &  
Adventure

Interconnectedness

Working well with  
people &  
developing empathy

# 5 MINDS FOR THE FUTURE (HOWARD GARNER)

## Disciplined Minds

- Strong Foundation in Subject Areas

## Synthesising Minds

- Ability to take in multiple information for decision making

## Creating Minds

- To be creative and innovative in looking at issues.

## Respectful Minds

- To show appreciation and respect for differences around them.

## Ethical Minds

- To be grounded in values and ethics.



# OUR VALUES

- Respect For Self And Others
- Always Be Gracious
- Desire For Learning
- Ignite Creativity And Innovation
- Never Give Up
- Maximize Potential
- Aim For Excellence
- Stand Up For Integrity



## CULTIVATING POSITIVE HABITS: PUNCTUALITY

- Students must be seated at the Parade Square each morning by 7:40 a.m.
- Punctuality is a **life-long habit** that we want to cultivate in each child
- Students are reminded regularly of the importance of being on time
- When you are on time, you show that you value and **respect** others

## **SCHOOL MEASURES TO INCULCATE THIS POSITIVE HABIT**

- Engaging the parents through Form Teachers, Year Heads, HOD Discipline or School Leaders
- Students who are repeatedly late may get a Conduct grade between Good or Fair.
- Students who are late 20 times or more in a semester may be recommended for a Fair Conduct Grade.
- A Fair Grade may have implications on eligibility for awards, scholarships and even DSA.
- A letter of Notice will be issued if your child is at risk of getting a Fair Grade.

# THE RADIN MAS EXPERIENCE ACROSS 6 YEARS

**Developing our students as Confident Learners, Self-Directed Leaders, Active Contributors and Concerned Citizens**

Sharpening Minds

- Authentic Learning
- Academic Programmes
- Design Thinking and Making
- Applied Learning (Computational Thinking)
- Multi-Disciplinary Project Work
- Talent Development Plans

Growing Character

- Growing Resilience, Independence and Teamwork (G.R.I.T through our CAMPs for All programme)
- CCAs
- Values Based Education
- Positive Education

Broadening Horizons  
but Staying Rooted

- Overseas Trips
- Appreciation of Global Issues
- National Education
- Strong Sense of Advocacy and Leadership through VIAs

**Anchored in the School's Mission, Vision And Values and also to imbue Joy of Learning, Entrepreneurial Dare and Singapore Spirit**

# LEARN FOR LIFE

- A value, an attitude and a skill
- Inculcating greater joy of learning
- Reducing the over-emphasis of academic results
- Nurturing lifelong learners with stronger intrinsic motivation to learn

*'Learn for Life' is a value, an attitude and a skill that our students need to possess, and it is fundamental in ensuring that education remains an uplifting force in society. ...As [our education system] becomes more complex, we need to be clear-eyed that in this matured system, there are trade-offs within the system, and we must take sufficient bold steps to rebalance those trade-offs when needed.*

---

*-Minister Ong Ye Kung, MOE WPS 2018*

---

## LEARN FOR LIFE INITIATIVES AT PRIMARY 4:

### **Radin Mas Current Practices.**

- Removal of class and level positions.
- Removal of min, max and mean marks.

### **Further Refinements:**

- Removing underline for failed marks.
- Marks will be presented as whole numbers.



## PRIMARY 4 EXAMINATIONS

### P4 Workflow

SA1 in Term 2  
(30%)



SA2 in Term 4  
(70%)



RMPS recommends suitable  
subject combination based on  
student's P1-P4 performance

Parents endorse  
school's  
recommendation OR  
select another subject  
combination



# EXAMINATION POLICIES

- Pupils who are not well **will NOT be allowed** to sit for the examination even if they turn up in school. Parents will be asked to take them home.
- The school will consider the examination results of pupils who sit for their written examination papers while on Medical Leave null and void.
- There will be no re-tests for pupils who are absent from any written component(s)/ paper(s) during the examination.
- A copy of the examination paper(s) missed (except Oral & Listening Comprehension Papers) will be given to them for reference/ practice at home



# SUBJECT BASED BANDING



## WHY SUBJECT BASED BANDING?

“WE RECOGNISE DIFFERENT ABILITIES...AND  
HELP EACH STUDENT TO PROCEED AT A  
PACE THAT HE CAN MANAGE.”

MR THARMAN SHANMUGARATNAM,



## SUBJECT BASED BANDING

- In line with the principle of Student-Centricity
- Provide more flexibility for students to take **subjects at different levels** depending on their aptitudes and abilities
- Allow students with uneven abilities the option of offering either their stronger subjects at standard level, or their weaker subjects at foundation level.

## GUIDING PRINCIPLES OF SBB

- Premised on **ability-driven education**
- Provide students with strong foundation in literacy and numeracy for successful progression (enhance employability & capacity for **lifelong learning**)



# Implementation of SBB

[At the End of P4]

If your child	Your child may be recommended to take
Passes all 4 subjects and performs very well in MTL	<ul style="list-style-type: none"><li>• 4 standard subjects + Higher Mother Tongue Language (HMTL)</li></ul>

# Implementation of SBB

[At the End of P4]

If your child	Your child may be recommended to take
Passes all 4 subjects	• 4 standard subjects
Passes 3 subjects	• 4 standard subjects

# Implementation of SBB

[At the End of

If your child	Your child may be recommended to take
Passes 2 subjects or less	<ul style="list-style-type: none"><li>• 4 standard subjects OR</li><li>• 3 standard subjects + 1 other foundation subject OR</li><li>• 2 standard subjects + 2 other foundation subjects OR</li></ul>

# Implementation of SBB

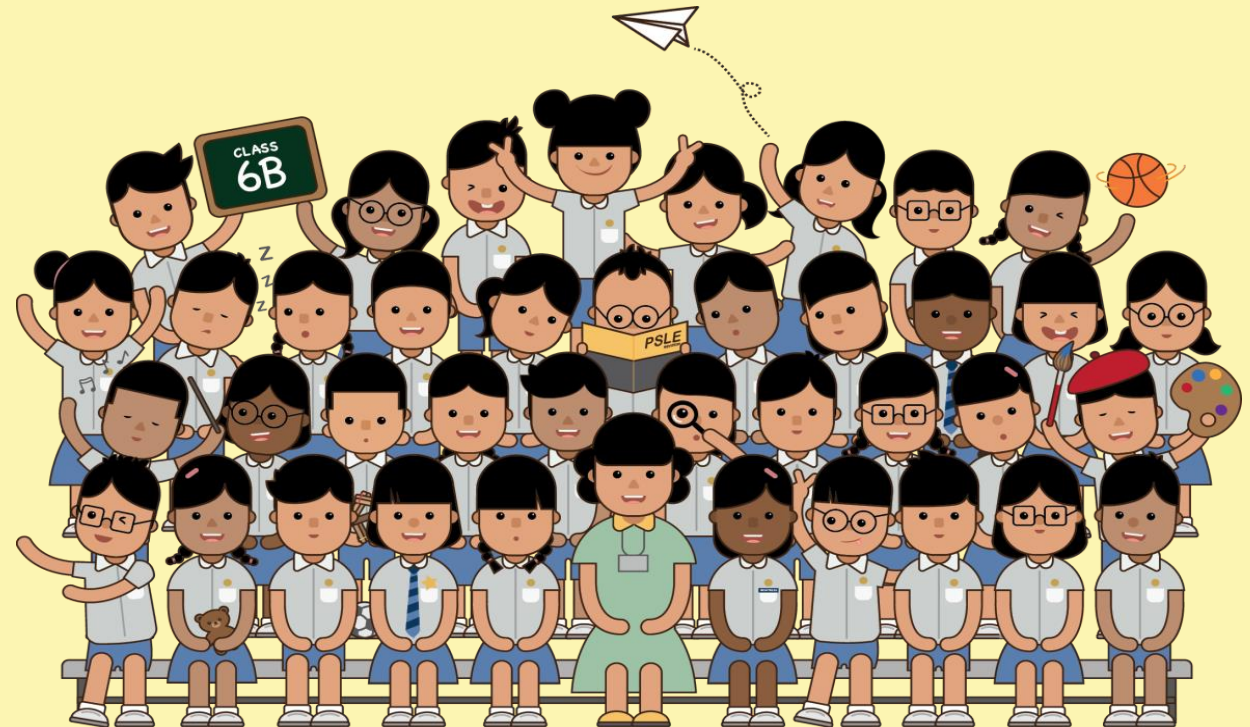
When exercising your option WITH your child,  
please opt wisely...for a subject combination that  
matches your child's ability

**NOT**

- What your other children were capable of
- What you want of your child
- Where your child's friends are, because they cannot be in the same class forever

# CHANGES TO THE PSLE SCORING SNAPSHOT PSLE 2021

IT'S PART OF  
A BIGGER STORY



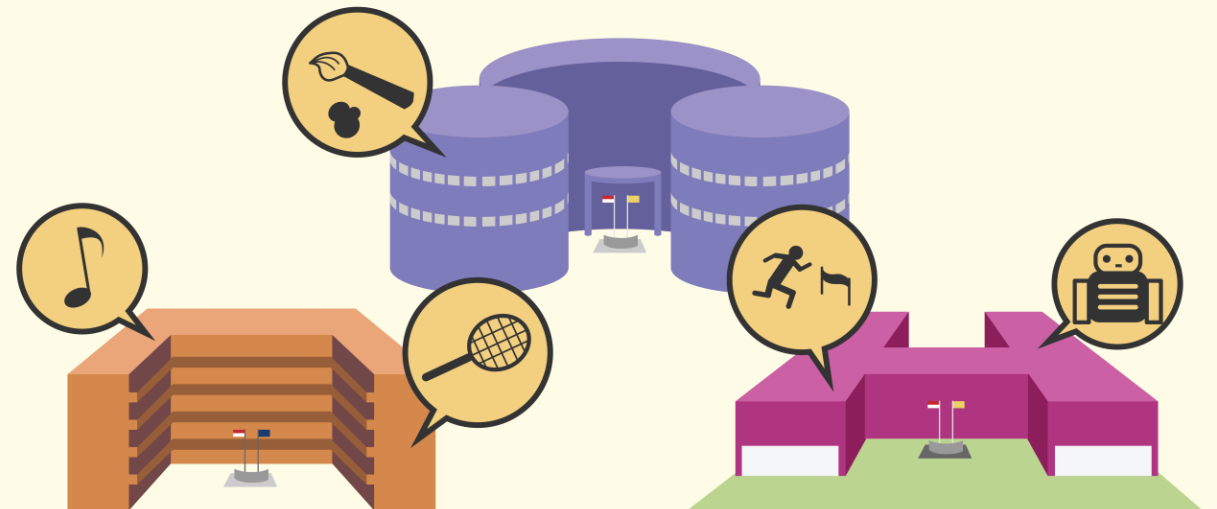
# OUR EDUCATION SYSTEM AIMS TO:

## NURTURE WELL-ROUNDED INDIVIDUALS

- Develop students holistically in every domain of learning
- Equip students with knowledge, skills, values and competencies for life

## PROVIDE OPPORTUNITIES FOR CHILDREN TO DISCOVER AND DEVELOP THEIR STRENGTHS & INTERESTS

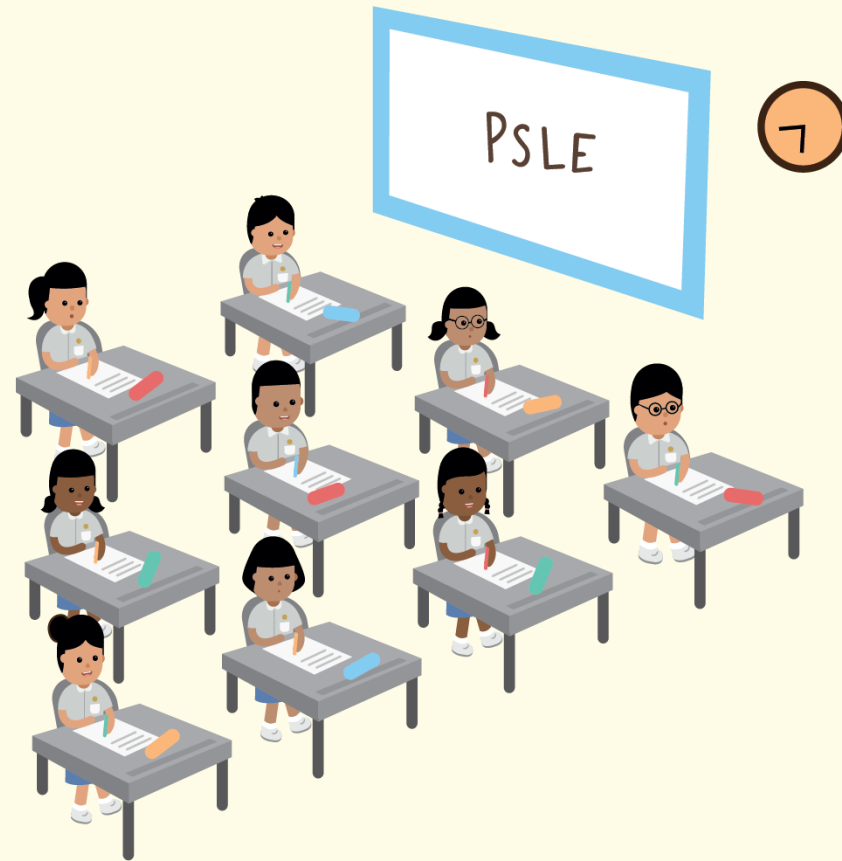
- Diversified school landscape
- Multiple pathways at various stages





## THE PSLE REMAINS A USEFUL CHECKPOINT

It gauges the level of students' learning in the core subjects at the end of six years of primary school and guides his future choices.



---

# HOW PSLE SCORING WORKS



## WHAT THE NEW PSLE SCORING SYSTEM AIMS TO DO

- Reduce fine differentiation of students at a young age based on exam scores.
- Recognise a student's level of achievement in each subject, regardless of how his peers have done.



## STUDENTS WITH SIMILAR SCORES IN EACH SUBJECT WILL BE GROUPED INTO THE SAME ACHIEVEMENT LEVEL

- There will be 8 Achievement Levels (ALs), with AL1 being the best.
- A student's AL for each subject will reflect his level of achievement, rather than how he has performed relative to his peers.

PER SUBJECT
AL 1 (BEST)
AL 2
AL 3
AL 4
AL 5
AL 6
AL 7
AL 8 (UNGRADED)

## WHY 8 ACHIEVEMENT LEVELS?

- This offers a good balance.
- It reduces fine differentiation between students while still giving parents and educators a gauge of a student's progress at the end of primary school.
- Students can then be matched to suitable academic programmes in secondary schools.

PER SUBJECT
AL 1 (BEST)
AL 2
AL 3
AL 4
AL 5
AL 6
AL 7
AL 8 (UNGRADED)

## REFERENCE RAW MARK RANGES

- To guide school-based assessments, we will provide reference raw mark ranges for each AL.
- These are based on learning objectives of the curriculum.

### CONSIDERATIONS

- To have educationally meaningful differentiation of students.
- At the top ALs, the ranges are narrower as the PSLE is designed to show what students can do – on average, about half of the students will score AL4 or better.

AL	RAW MARK RANGE
1	$\geq 90$
2	85 – 89
3	80 – 84
4	75 – 79
5	65 – 74
6	45 – 64
7	20 – 44
8	$< 20$



## FOUNDATION-LEVEL SUBJECTS WILL ALSO BE SCORED ON ACHIEVEMENT LEVELS

- Foundation-level subjects are designed to support a small number of students who may not be able to cope with Standard-level subjects.
- This enables them to focus on building up strong fundamentals so that they are better prepared for secondary school.
- This way, the student will also build confidence to pursue learning at a level suitable for them.

Grades for Foundation Subjects	Foundation Raw Mark Range	Equivalent Standard Level AL
A	75-100	6
B	30-74	7
C	<30	8



## 4 SUBJECT ALs WILL BE ADDED TO FORM THE PSLE SCORE

- The PSLE Score replaces the T-score Aggregate.
- The PSLE Score ranges from 4 to 32, with 4 being the best.
- Compared to the T-score Aggregate, students are less finely differentiated.



ENGLISH	AL3
MOTHER TONGUE	AL2
MATHEMATICS	AL1
SCIENCE	AL2

---

**PSLE SCORE: 8**

## STUDENTS WILL BE STREAMED BY THEIR PSLE SCORE

- Students will continue to be placed in the appropriate Secondary School courses – Express, Normal (Academic), Normal (Technical) or option bands.

PLACEMENT OUTCOME	PSLE SCORE
EXPRESS	4 – 20
EXPRESS / N(A) option	21 – 22
N(A)	23 – 24
N(A) / N(T) option	25
N(T)	26 – 30, with AL7 or better in both EL <u>and</u> MA

MORE DETAILS ON PSLE WILL BE SHARED IN 2021

- School will share more details on **Direct School Admission** Exercise as well as the **Secondary School Posting** processes and structures in 2021 and 2022.

## CONCLUSION

Wishing you and your child a wonderful year filled with joy and growth ahead!

