

Primary 6 2021 Parent's Briefing

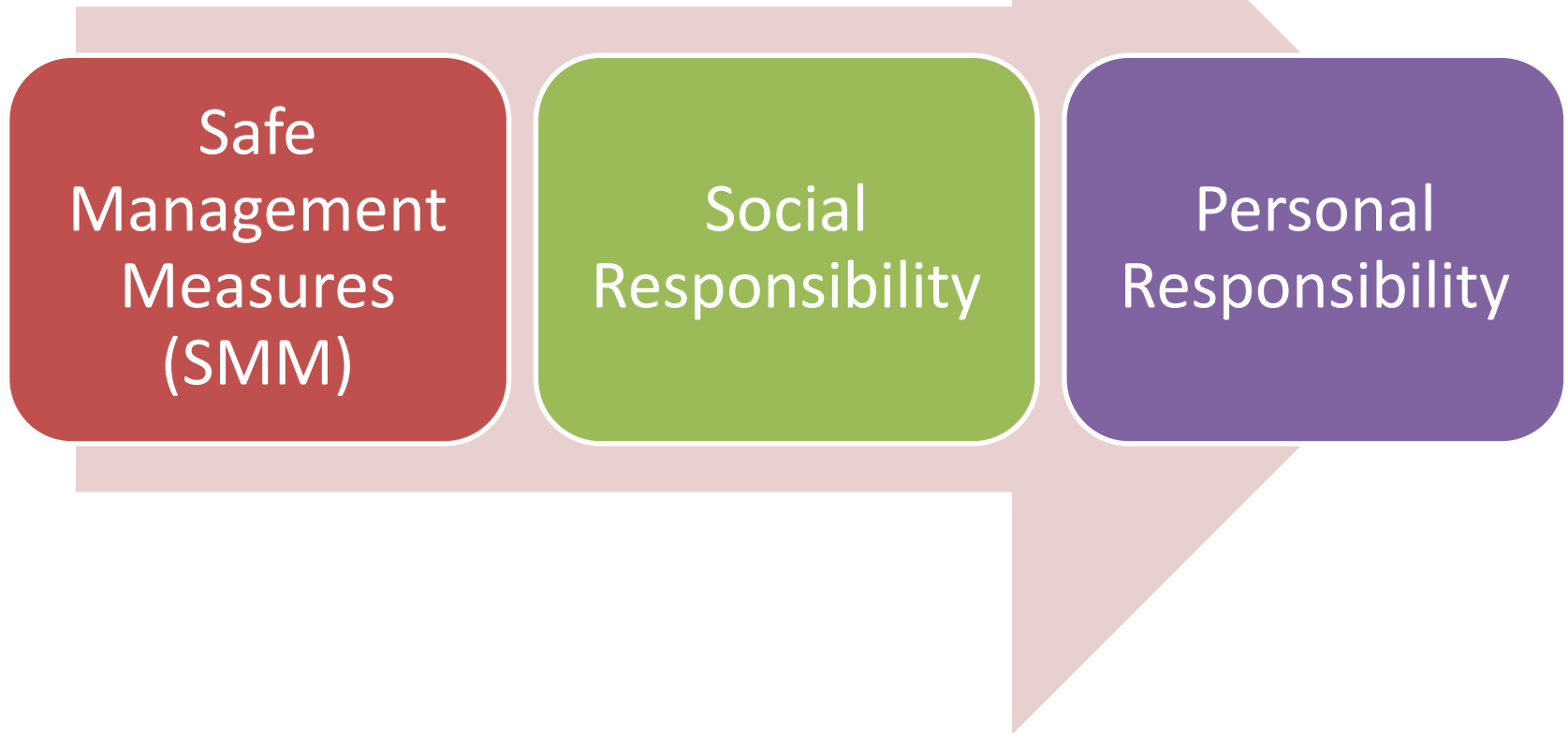


New Vice-Principal Administration



Miss Mary Goh

Managing Covid-19 together (Three pronged approach)



Managing Covid-19 together

SMM

- Visual checks and temp checks daily.
- Staggered recesses and dismissal.
- No Mass assemblies (flag raising will be in class)
- Strict guidelines for PE and other school based events.

Social Responsibility

- Wipe down daily (Recess and before the end of the school day)
- Maintaining social distance
- Designated fixed seatings and play areas during recess

Personal responsibility

- Wearing of Face mask (default option)
- Remain at home if child or family members are unwell
- Managing personal hygiene

A Gentle Reminder!



**Please
stay at home
if any of your family or
people living with you
are unwell with flu-like
symptoms.**

**Please do not enter the school if you are on
Quarantine Order (QO), Stay Home Notice
(SHN), or Leave of Absence (LOA).**

**Let us all play our part in keeping
everyone safe and healthy!**

Our Vision

A School Where All Work Hard, Play Hard &
Make A Mark



Our Vision



Work Hard

- Holistic Development (Academic & Non Academic)
- Self-Directed Learners
- To always push themselves
- Grit/Resilience



Play Hard

- Positive school experiences.
- Combination of both structured play and unstructured play
- Build positive ties
- Develop passion, interest and talents



Make A Mark

- Discovering passion, interests and talents.
- Internalising the school values.
- Strong sense of advocacy.
- A spirit of dare and continuous learning.

Our Mission

- TO DEVELOP EACH CHILD HOLISTICALLY,
EQUIPPING HIM WITH THE COMPETENCIES
FOR THE FUTURE



RMPS Mission

Values (RMPS Values)

Skills (21st Century Skills)

Dispositions (Anchored on Pos ED)

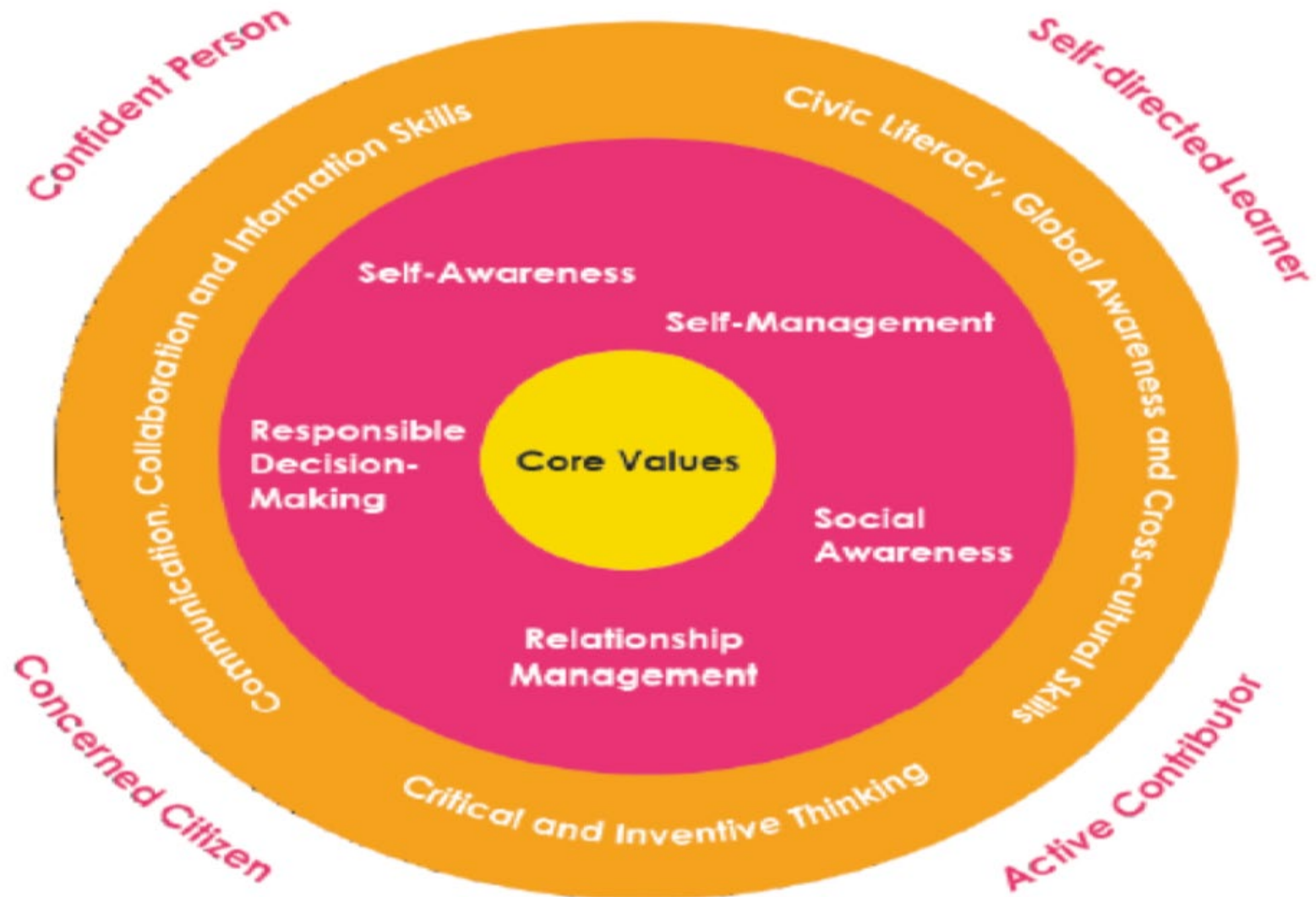
Attitude and Habits (GRIT)

Our Values

- **R**espect For Self And Others
- **A**lways Be Gracious
- **D**esire For Learning
- **I**gnite Creativity And Innovation
- **N**ever Give Up
- **M**aximize Potential
- **A**im For Excellence
- **S**tand Up For Integrity



Desired Outcome of Education



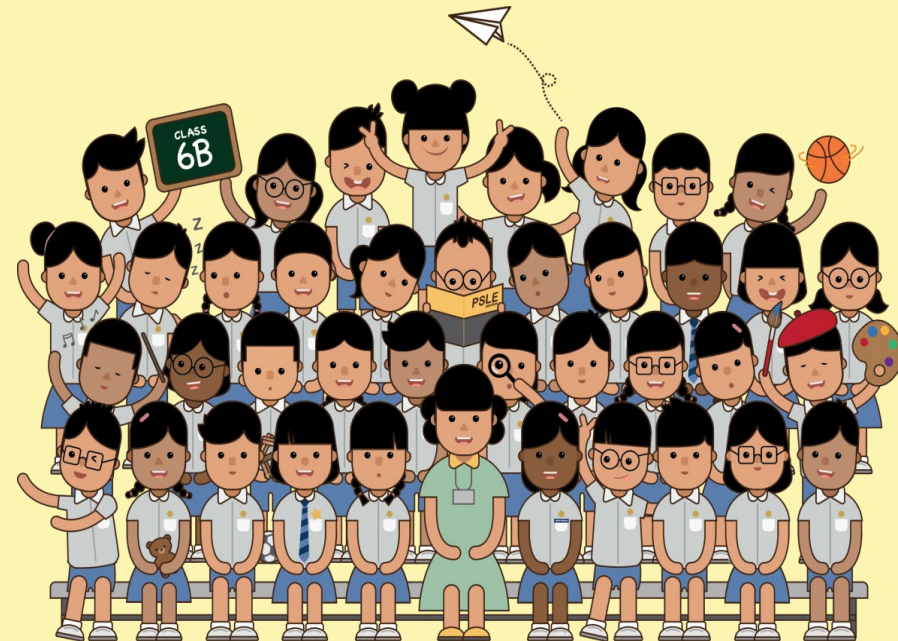
What is Positive Education

- Positive Education refers to a set of practices, processes and structures to allow our students to feel a sense of Flourish.
- Flourish here is defined as feeling good, doing good and being good.
- Positive Education focuses on specific skills that assist students to **strengthen their relationships, build positive emotions, enhance personal resilience, promote mindfulness and encourage a healthy lifestyle.**

CHANGES TO THE PSLE SCORING & S1 POSTING FROM 2021

IT'S PART OF
A BIGGER STORY

PARENTS ENGAGEMENT SESSION



OVERVIEW

All students

1. How PSLE Scoring Works
2. How S1 Posting Works
3. Presentation of results in Achievement Levels
4. Subject-based Banding (Primary Schools)
 - Scoring for Foundation Subjects
5. **[New]** Indicative Achievement Level (AL) Cut-Off Point Ranges for Different School Types
6. **[New]** Subject-Based Banding (Secondary) under the AL Scoring System

Students taking HMTL

- Eligibility for Higher Mother Tongue Language (HMTL) in Secondary School
- Use of Higher Chinese Language (HCL) for Admission to SAP Schools

MTL-exempt, AsL or FL students

- Scoring for Mother Tongue Language (MTL)-exempt students and students studying an Asian Language/ Foreign Language (AsL/FL) in lieu of an MTL

THE PSLE CHANGES ARE PART OF A BIGGER STORY

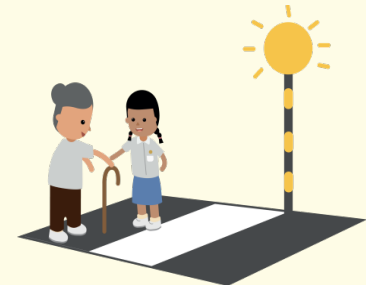
Over the years, we have been fine-tuning the education system to help our students discover and develop their strengths and interests, while moving away from an over-emphasis on academic results.

Our PSLE scoring changes aim to:

- Reduce fine differentiation at a young age
- Recognise students' level of achievement, regardless of how their peers have done

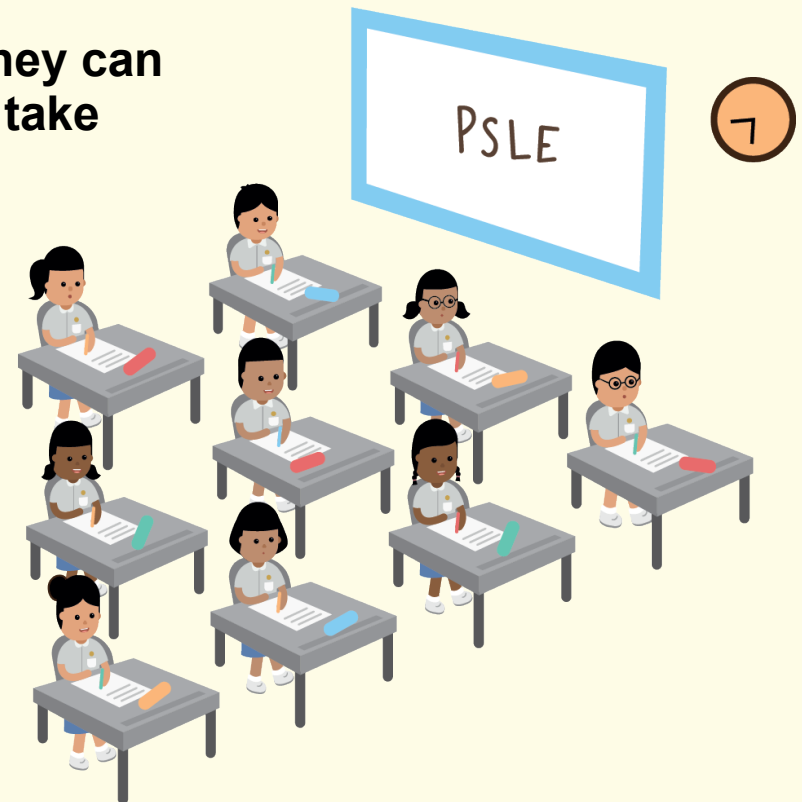
The changes will not affect the curriculum and subjects tested at PSLE

- However, MOE does review the curriculum regularly to ensure that it is relevant and up-to-date. This will continue as per current practice.



THE PSLE REMAINS A USEFUL CHECKPOINT

- To understand where our children are at in their learning after six years of primary school
- Gauge their learning needs so that they can progress to a secondary school and take subjects at a suitable level



FROM T-SCORE TO WIDER SCORING BANDS

Reflects a student's individual level of achievement

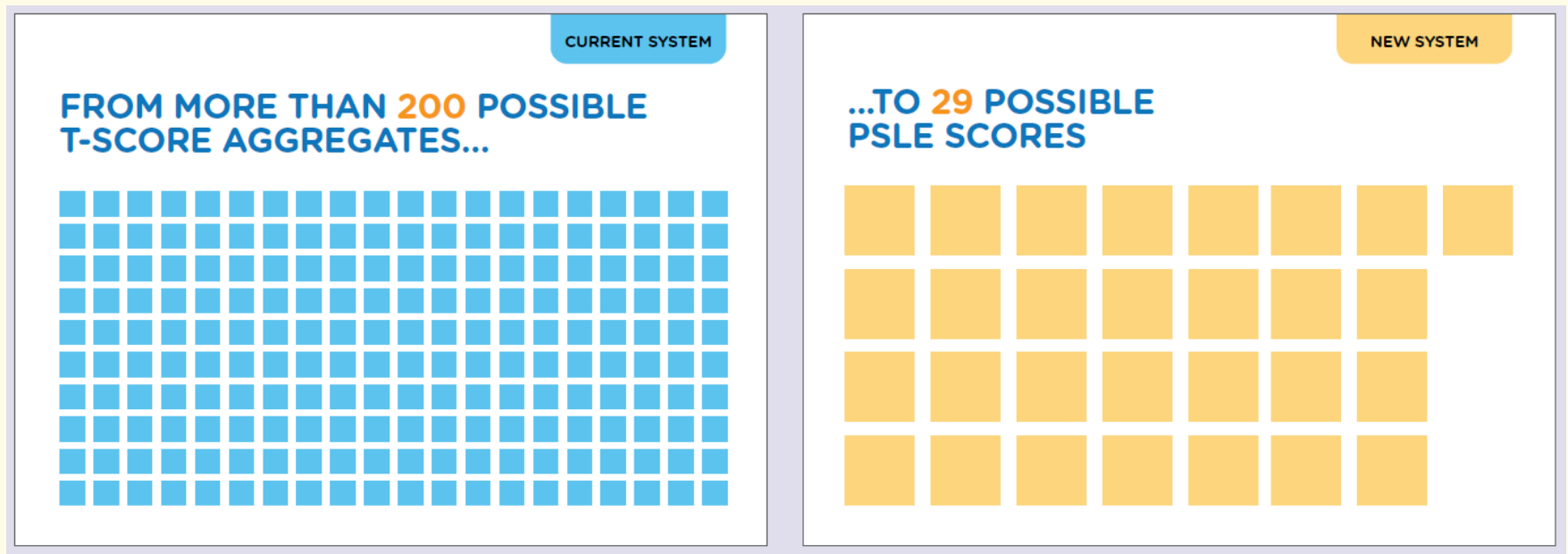
Unlike the current T-score, students' AL for each subject will reflect their level of achievement, rather than how they have performed relative to their peers.

AL	RAW MARK RANGE
1	≥ 90
2	85 – 89
3	80 – 84
4	75 – 79
5	65 – 74
6	45 – 64
7	20 – 44
8	< 20

FROM T-SCORE TO WIDER SCORING BANDS

Reduces fine differentiation of students

Students with similar scores in each subject will be grouped into wider bands measured in Achievement Levels (ALs).



Students' scores are differentiated finely. Students can have a T-score aggregate of less than 80 to more than 280, which gives **more than 200 possible different T-score aggregates**.

Students will be placed in fewer groups of PSLE Scores. Students' PSLE scores (the sum of the AL for each subject) will range from **4 to 32**, which gives **29 possible different scores**.

FROM T-SCORE TO WIDER SCORING BANDS

- The PSLE Score replaces the T-score aggregate.
- It is obtained by adding the ALs of four subjects.
- The PSLE Score ranges from 4 to 32, with 4 being the best possible score.
- Students will be placed in secondary school courses based on their overall PSLE score – Express, Normal (Academic) or Normal (Technical).



ENGLISH	AL3
MOTHER TONGUE	AL2
MATHEMATICS	AL1
SCIENCE	AL2

PSLE SCORE: 8

PLACEMENT OUTCOME	PSLE SCORE
EXPRESS	4 – 20
EXPRESS / N(A) OPTION	21 – 22
N(A)	23 – 24
N(A) / N(T) option	25
N(T)	26-30, with AL7 or better in both EL <u>and</u> MA



WHY ARE THE AL BANDS NOT EVEN?

AL bands and mark ranges are set based on the **learning objectives of the curriculum, and mirror the way we learn:**

- When we learn something new, after some initial practice, we often find ourselves improving significantly.
- But as we get better, the improvements become small steps, and finally, as we reach a high level, we inch just a little further, even after much learning and practice.

The ALs were designed to reflect this reality of learning. They help educators, students, and parents know **how ready students are to access the curriculum at the next level.**

AL	RAW MARK RANGE
1	≥ 90
2	85 – 89
3	80 – 84
4	75 – 79
5	65 – 74
6	45 – 64
7	20 – 44
8	< 20



IN SUMMARY...

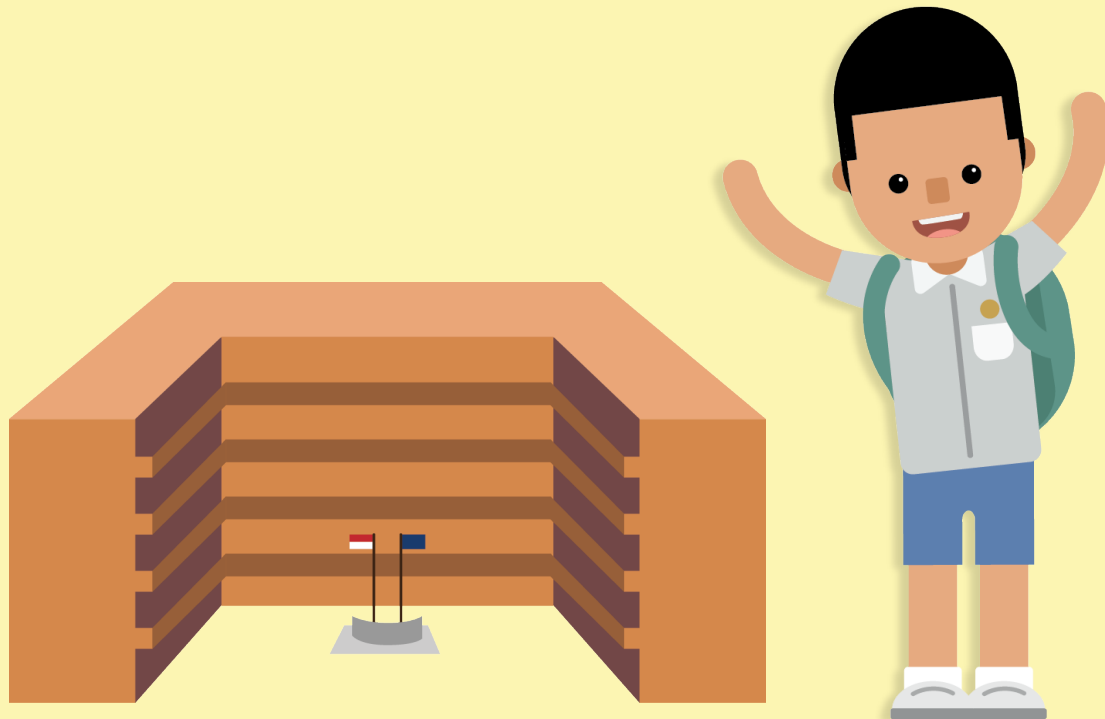
WHAT REMAINS

- Same 4 subjects are tested, and scores are awarded to guide students' choices for the next stage of their education journey
- Curriculum is continually updated. This is not related to the PSLE scoring and S1 posting changes.

WHAT CHANGES

- The T-score Aggregate will be replaced by the PSLE Score, to reduce the fine differentiation of our students at a young age based on exam scores.
- Students will be assessed based on their own achievement, instead of comparing them to their peers.

HOW S1 POSTING WORKS



CHOICE ORDER OF SCHOOLS WILL MATTER MORE

- Students will continue to be posted to a secondary school based on academic merit i.e. overall PSLE score.
- If two or more students with the same PSLE Score vie for the last remaining place in a school, tie-breakers will be used in the following order:

1. CITIZENSHIP

2. CHOICE ORDER OF SCHOOLS (NEW for 2021 PSLE cohort onwards)

3. COMPUTERISED BALLOTING



EXAMPLE:

4 students - Jane, Bryan, Mary and John, are vying for the last places in School A and School B.

Jane
Singapore
Citizen



JANE'S SCHOOL CHOICES	
1.	School A
2.	...
3.	...
4.	...
5.	...
6.	...

Bryan
Singapore
Citizen



BRYAN'S SCHOOL CHOICES	
1.	School B
2.	School A
3.	...
4.	...
5.	...
6.	...

Mary
Singapore
Citizen



MARY'S SCHOOL CHOICES	
1.	School A
2.	School B
3.	School C
4.	...
5.	...
6.	...

New Slide

John
Singapore PR



JOHN'S SCHOOL CHOICES	
1.	School A
2.	School B
3.	School D
4.	...
5.	...
6.	...

Students with better scores will be posted first

Jane will be posted first as she has a better PSLE score, and will be posted to School A.

As Jane has taken that last place in School A, Bryan, Mary and John, having the same PSLE score, will vie for the last available place in School B.

Tie-breaker 1:
Citizenship

Bryan and Mary are Singapore Citizens and will have a priority to enter School B.

John will be tie-broken out as he is a Permanent Resident. With no places in School B, John will be considered for School D.

Tie-breaker 2:
Choice order of schools

As Bryan ranked School B higher than Mary in his choice order of secondary schools, he will be posted to School B.

Since the last place of School B is taken by Bryan, Mary will be considered for School C.

Tie-breaker 3:
Computerised balloting

PRESENTATION OF RESULTS IN ACHIEVEMENT LEVELS



PRESENTATION OF RESULTS IN ALs

- Starting from the 2020 P5 cohort, schools will present school-based examination results of P5 and P6 students in ALs.
 - 2020 P6 students will not be affected, nor will P1 to P4 students.
- This will help familiarise students and parents with the new AL scoring system.
- The AL reflects the mastery of a broader curriculum, rather than for topical or component performance. As such, **AL will not be reflected for weighted assessments (WA).**

Holistic Development Profile

Page: 1 of 1
Date: 29 Nov 2020

Name : Joyce
Age on 1st Jan : 10
Class : 5 Challenge S/N : 5
Form Teacher : Miss Tan
Co-Form teacher : Miss Low

Identification No: T09XXXXXF
Subject Combination: 3S1F(FSC)

SUBJECT	TERM 3: WA	END OF YEAR EXAM		OVERALL	
	Mark	Mark	AL	Mark	AL
ENGLISH LANGUAGE	85	88	2	86	2
MATHEMATICS	74	76	4	75	4
FOUNDATION SCIENCE	65	74	8	70	8
CHINESE LANGUAGE	87	88	2	88	2
	Grade	Grade		Grade	
SOCIAL STUDIES	-	-		A	
ART	-	-		A	
MUSIC	-	-		B	
PHYSICAL EDUCATION	-	-		B	
OVERALL					
Total Achievement Level (AL) Score		: 15			
Attendance		: 95/95			
Class for Next Year		: P6-CH			
Subject Combination for Next Year		: 3S1F(FSC)			

AL will not
be reflected
for WA

Update from
"Grade" to "AL"

New Field to compute "Total AL Score"

SCORING FOR FOUNDATION LEVEL SUBJECTS



FOUNDATION SUBJECTS GRADED IN 5 BANDS TODAY

- Under the current PSLE grading system, Foundation subjects are graded in 5 scoring bands from Grade 1 to U.

Current System	
Grade	Raw Mark Range
1	85 – 100
2	70 – 84
3	50 – 69
4	30 – 49
U	< 30

FOUNDATION LEVEL SUBJECT GRADES TO BE LESS FINELY DIFFERENTIATED

- Under the new AL system, to reduce fine differentiation among students, Foundation subject grades will be graded in 3 scoring bands from AL A to C.
- Like Standard subject ALs, the Foundation subject ALs will reflect a student's level of achievement, rather than how they have performed relative to their peers.

Foundation Level AL Reflected on Result Slip	Foundation Raw Mark Range
A	75 – 100
B	30 – 74
C	< 30

FOUNDATION LEVEL SUBJECT GRADES

- For the purpose of S1 posting, Foundation level AL A to AL C will be mapped to AL 6 to AL 8 of Standard level subjects respectively, to derive a student's overall PSLE Score.
- Similar to the current PSLE scoring system, this mapping is based on the learning and assessment load of the subjects, and informs students of their readiness to access the curriculum at the secondary level.

Foundation Level AL Reflected on Result Slip	Foundation Raw Mark Range	Equivalent Standard Subject AL	Standard Raw Mark Range
A	75 – 100	6	45-64
B	30 – 74	7	20-44
C	< 30	8	<20

SCORING OF FOUNDATION SUBJECTS FOR S1 POSTING

- A student's PSLE Score is the sum of the four AL scores across his/her Standard and Foundation subjects.
- Students taking Foundation subjects are eligible for the Express Course, as long as they meet the course placement criteria.
- With Full Subject-based Banding in secondary schools, students may also take subjects at a higher level for those that they are strong in.



ENGLISH AL3

FOUNDATION MOTHER TONGUE ALB

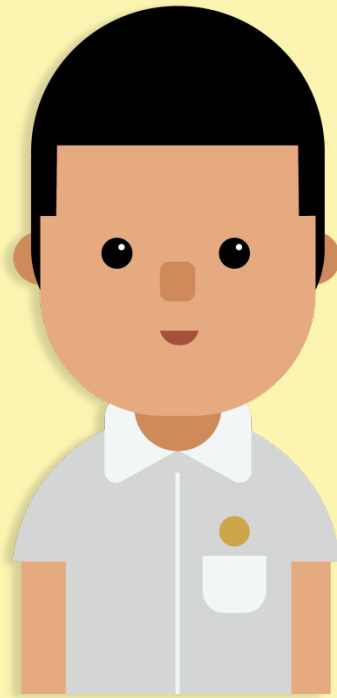
FOUNDATION MATHEMATICS ALB

SCIENCE AL5

PSLE SCORE: 22

PLACEMENT OUTCOME	PSLE SCORE
EXPRESS	4 – 20
EXPRESS / N(A) option	21 – 22
N(A)	23 – 24
N(A) / N(T) option	25
N(T)	26 – 30, with AL7 or better in both EL <u>and</u> MA

ELIGIBILITY FOR SECONDARY SCHOOL HIGHER MOTHER TONGUE LANGUAGE (HMTL)



ELIGIBILITY FOR HMTL IN SECONDARY SCHOOLS

- The eligibility criteria for taking HMTL is intended to ensure that students can cope with the higher academic load, and takes reference from the current criteria.

ELIGIBILITY CRITERIA FOR SECONDARY SCHOOL HMTL

(i) PSLE Score of 8 or better

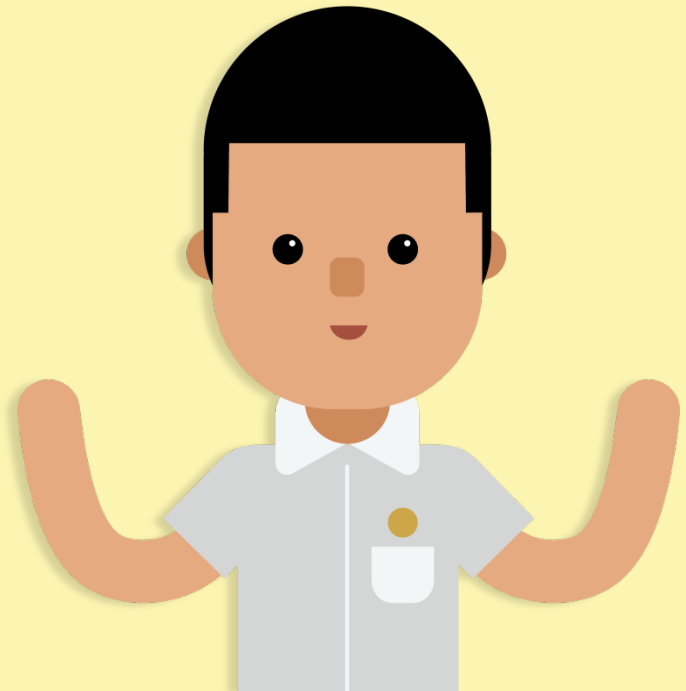
OR

(ii) PSLE Score of 9 to 14 inclusive; and attain

- AL1 / AL2 in MTL or
- Distinction / Merit in HMTL

- For students who do not meet the above criteria, secondary schools will continue to have the flexibility to offer HMTL to students, if they are assessed to have high ability and interest in MTL and are able to take HMTL without affecting their performance in other subjects.

USE OF HCL FOR ADMISSION INTO SAP SCHOOLS



USE OF HCL FOR ADMISSION INTO SAP SCHOOLS

Prior to 2021

Currently, for admission to SAP schools, students are awarded bonus T-score points based on their HCL grade:

- 3 points for Distinction
- 2 points for Merit
- 1 point for Pass



From 2021 Onwards








- Students with better PSLE scores will be posted first, even if they did not take HCL (the 1st child with 7).
- Amongst students with the same PSLE score, those with better HCL grades will be posted first. (the 2nd to 5th child with 8).
- This posting advantage applies before the tie-breakers for S1 posting.

EXAMPLE:

Using HCL for Admission into SAP Schools

Students who take HCL will receive a posting advantage when applying to SAP schools

Students will be considered for admission to SAP schools in the following order:

1st		7	NO HCL	Students with better PSLE Scores will be posted first, even if they did not take HCL
2nd		8	DISTINCTION	
3rd		8	MERIT	Amongst students with the same PSLE Score, those with better HCL grades will be posted first
4th		8	PASS	
5th		8	NO HCL	
6th		9	DISTINCTION	



INDICATIVE ACHIEVEMENT LEVEL (AL) CUT-OFF POINT (COP) RANGES FOR DIFFERENT SCHOOL TYPES



INDICATIVE ACHIEVEMENT LEVEL (AL) CUT-OFF POINT (COP) RANGES FOR DIFFERENT SCHOOL TYPES

- To further familiarise the first batch of students and parents with the new PSLE 2021 scoring system, MOE is providing more information on indicative AL COP ranges for different school types, generated based on data from the 2019 S1 Posting Exercise.
- Similar to the current T-score system, the AL COP for a school may vary from year to year, depending on students' PSLE results and their school choices for that year's S1 Posting Exercise.
- Information on individual secondary schools' indicative AL COPs will be released in first half of 2021. These AL COPs will be derived from the PSLE Scores and choice patterns of the 2020 S1 Posting Exercise.

INDICATIVE ACHIEVEMENT LEVEL (AL) CUT-OFF POINT (COP) RANGES FOR DIFFERENT SCHOOL TYPES

Government & Government-aided Schools

These schools are the mainstay of our education system, and offer high-quality education at standardised fees. These schools offer a range of electives, applied subjects and student development programmes.

Course

Indicative AL COP range for 2019 PSLE

**Express (Integrated
Programme (IP))**

7 – 9

Express (O-level)

8 – 22

N(A)

22 – 25

N(T)

26 – 30

INDICATIVE ACHIEVEMENT LEVEL (AL) CUT-OFF POINT (COP) RANGES FOR DIFFERENT SCHOOL TYPES

Autonomous Schools These schools are Government or Government-aided schools that provide a wider range of programmes that seek to enhance students' learning experiences and develop their talents.	Course	Indicative AL COP range for 2019 PSLE
	Express (IP)	7 – 9
	Express (O-level)	8 – 16
	N(A)	22 – 25
	N(T)	26 – 29

Independent schools These schools have the autonomy to develop their curriculum and programmes to cater to their students' diverse learning needs.	Course	Indicative AL COP range for 2019 PSLE
	Express (IP)	6 – 8
	Express (O-level)	8 – 10

CHOOSING A SUITABLE SECONDARY SCHOOL



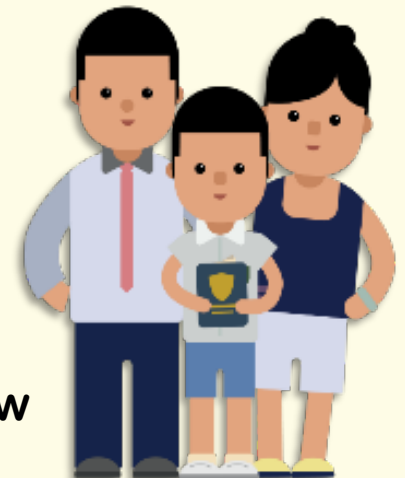
DISCUSS WITH YOUR CHILD

- Consider your child's learning style, strengths and interests when making school choices in order to find a school that would help the child learn and thrive best.
- Discuss the options with the child, with the following considerations:
 - **Values:** What is the school's culture and ethos?
 - **Learning environment:** Is the school's learning environment right for the child?
 - **Distinctive programmes and CCAs:** Can the school support and develop the child's interests?
 - **Location:** Is it too far from home? How will the child get to school?



RESOURCES

- MOE SchoolFinder tool - More information on secondary schools can be found here, on school websites and in the Secondary 1 information booklet given to students in Primary 6.
- Open Houses - Secondary schools also hold open houses where you and your child can learn more about the school's programmes, and speak with teachers and students.
- Indicative cut-off points ranges for different school types
 - The indicative AL COPs ranges for school types can be used as reference point.
 - MOE will be providing indicative AL COPs for secondary schools in 1H/2021, based on the data from 2020 S1 posting exercise.
 - The actual cut-off points may differ, depending on how students exercise their choices that year.



SUBJECT-BASED BANDING (SECONDARY) ELIGIBILITY CRITERIA UNDER THE AL SCORING SYSTEM



SUBJECT-BASED BANDING (SECONDARY) [SBB (SEC)] ELIGIBILITY CRITERIA UNDER THE AL SCORING SYSTEM

- **Since 2018, MOE has introduced Subject-Based Banding (SBB) in all secondary schools with N(A) and N(T) courses.**
- **SBB (Sec) provides students with greater flexibility to take various subjects at a more demanding level based on their subject-specific strengths and aptitudes.**
- **Under the new PSLE scoring system, students from the Normal course will continue to be eligible to take subjects at a more demanding level at Secondary 1 based on their AL scores for individual subjects, to recognise and develop students' subject-specific strengths.**

SBB (SEC) ELIGIBILITY CRITERIA UNDER THE AL SCORING SYSTEM

- Under the new AL scoring system, the SBB (Sec) eligibility criteria is as follows:

PSLE Standard / Foundation Subject Grade	Option to take subject at
AL 5 or better in a Standard level subject	Express level
AL 6 or better in a Standard level subject <u>OR</u> AL A in a Foundation level subject	N(A) level

SBB (SEC) ELIGIBILITY CRITERIA UNDER THE AL SCORING SYSTEM



ENGLISH LANGUAGE	AL 6
MOTHER TONGUE LANGUAGE	AL 6
MATHEMATICS	AL A
SCIENCE	AL 5

PSLE SCORE: 23

- A student scores an overall Score of 23 and AL 5 for Science will be placed in the N(A) course. He will be eligible to take Science at a more demanding level (i.e. Express level) at Secondary 1.
- Taking up Science at a more demanding level would allow him to learn at a level more suited to his pace of learning, aptitudes and passions. It could also motivate him to be more meaningfully engaged.
- Eligible students can discuss with their parents and teachers to decide whether to accept the offer.
- As students grow and develop in secondary school, they will continue to have more opportunities to take subjects at more demanding levels based on their in-school performance, to further pursue their interests and develop to their fullest potential.

School-Home Partnership

Every Parent a supportive Partner



Working with Parents in Developing Grit, Passion, and Resilience in Children

Be a positive role model

Be a family that embraces challenges

Nurture your child's passions

Communicate with your child regularly

Help your child set goals

Allow your child to hold a certain degree of autonomy

Monitor your child's well being (emotional, mental, social)

Praise effort, not ability

Fundamentals at P6

- Self-Management & Discipline
- Independence and confidence
- Growth Mindset
- Positivity and resilience
- Social synergy (Class affect)
- Punctuality and regular attendance

Conclusion

Wishing you and your child a safe and wonderful year filled with joy and growth ahead!

