

RMPS P6 PARENTS' BRIEFING

1 February 2019



AGENDA

Part 1

Vice Principal's Address – School's Direction & Assessment Matters

Year Head's Address – Level Programmes & Partnership with Parents

Part 2

Academic Heads' Address – Curriculum Matters

Part 3

Meeting the Form Teachers – Class Focus



Physical

P6 Camp
Olympics Festival
CCA

Multi-Disciplinary

Multi-Disciplinary Project Work
Heritage Trails

Social & Moral

Character Workshops
Leadership Opportunities
Make a Mark
NE Commemorations
Cyber wellness Etiquette

Aesthetics

Art – Visual Arts/Artists
Music - Ukulele
Recess Recital

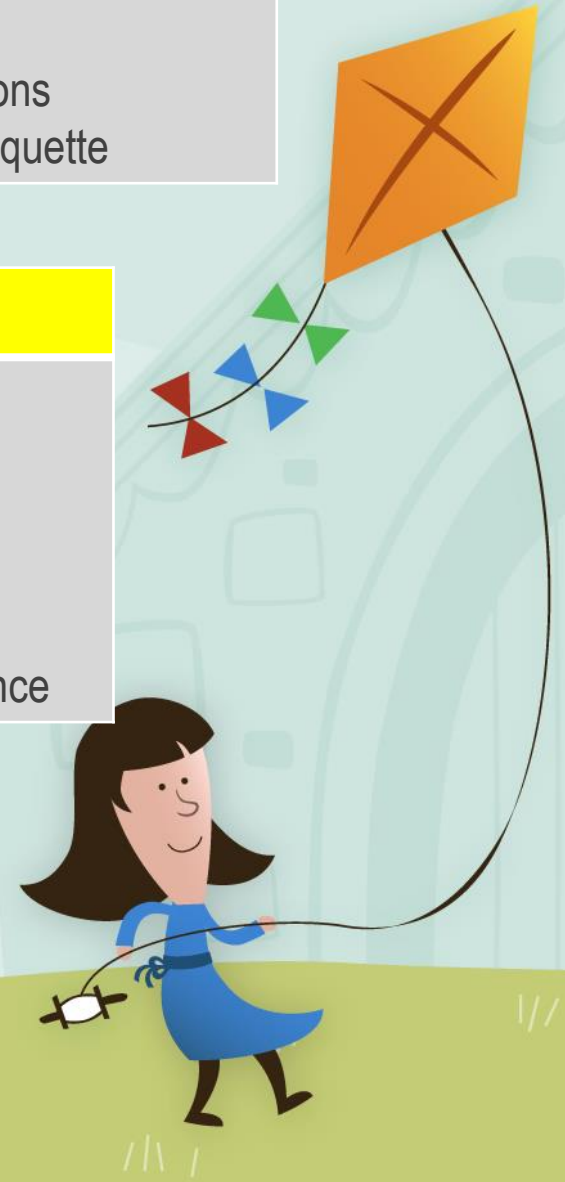
Health & Safety

Health Talks and Checks
Safety Talks
Fire / Lock Down Drill

Cognitive

Straight from the Heart
MT Experiential Learning
MT Fortnight
Math Alive
Science In Action
Third Language Experience

Connect knowledge and skills they have learnt with the real world ensuring an all-round development



P6 KEY PROGRAMMES





Cognitive



Multi-Disciplinary Project Work
(MDPW)

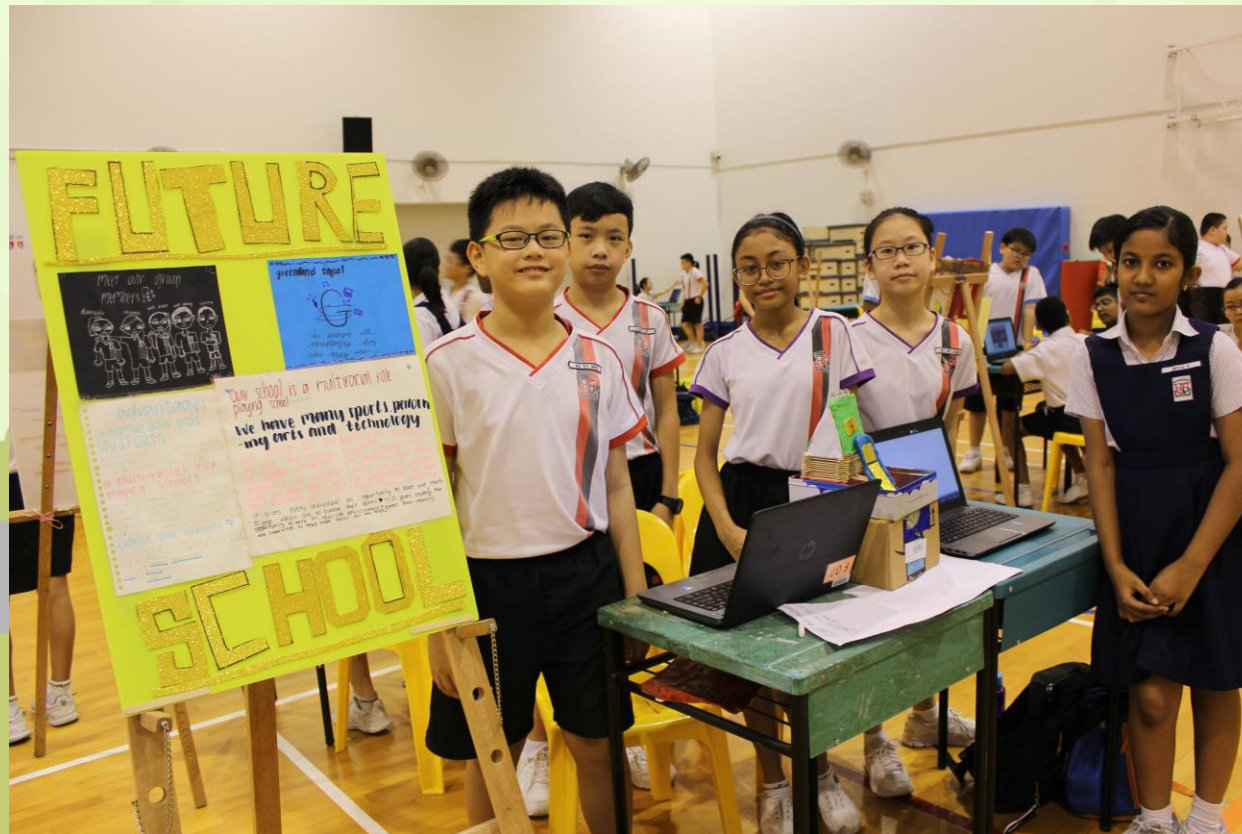


Applied Learning Programme

Creative
solutions

MULTI-DISCIPLINARY PROJECT WORK (MDPW) (Term 4 , Week 4)

Design
Thinking





Learning journeys and Talks by speakers from external organisations to make learning process more meaningful and engaging



3D Models



Board games

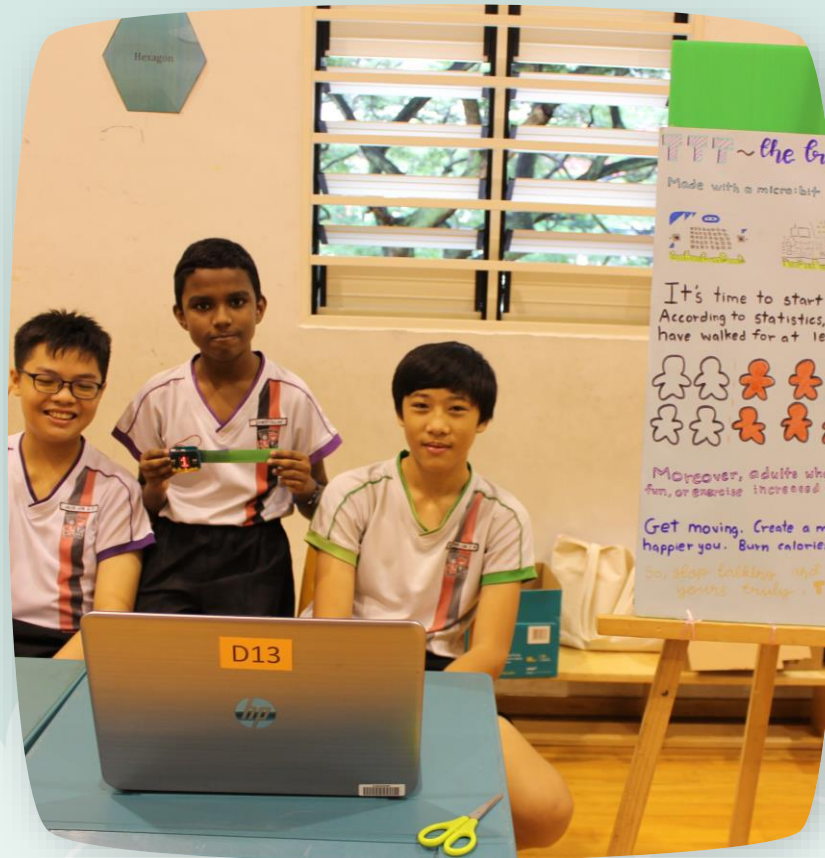
Varied modes of presentation



Recognise
importance
of giving
students a
voice



Posters



Micro bit – step tracker



Recognise
importance
of giving
students a
voice

Varied modes of presentation

Celebration of Learning



- Reflect and articulate what they have learned
- Students presenting to fellow schoolmates and parents their projects
- Platforms to develop confidence and hone communication skills





- Embark on 6 year progressive Computational Thinking integrated with Design Thinking curriculum
- Exposed to real world problems
- Coding - Drones



Applied Learning Programme



Physical & Aesthetics



- Music - Ukulele
 - P6 Camp
- Art – Visual Arts/Artists
- Recess Recital (showcase talents)
- Olympics Festival (track & field, relay games)
- Sports Education Programme

P6 Urban and Cultural Camp - Malacca (3D2N)

- Exposed to civic literacy and put their cross-cultural thinking and understanding to test as they immerse themselves in another culture
- Create opportunities for our students to appreciate and understand the various cultures in Malacca.
- Learn about Peranakan customs, traditions and architecture.
- Prepare our students for the challenges of a globalized world.
- Broaden the experience of our students so that they can appreciate Singapore's growth, development and constraints..





- Apply basic camping skills
- Working cohesively as a team



- Effective communication
- Responsible decision making



Build confidence
in students' self-
image through
leadership and
life skills training



**Character Education
Workshops**

NE Commemorations

Social & Moral





- Learn important lessons from Singapore's history
- Reflect how they can apply their learning to contribute as active citizens



NE Commemorations

Social & Moral

Academic Support Programmes

- Remedial Lessons (for selected groups of students) – Tues and Thurs
- June Hols Remedial Lessons – 26.06.2019, 27.06.2019 & 28.06.2019
- September Hols Remedial Lessons – 12.09.2019 & 13.09.2019
- Term 3 - CCA slots on Mondays will be changed to supplementary programmes
 - Attendance is compulsory



DSA – Support From School

- Dissemination of information on DSA – list of participating schools, their ALP and LLP and dates of open house (P5 & P6)
- Portfolio building (P5 & P6) – contents of portfolio
- Secondary School Fair will include P5 students and will be conducted end of May (better informed of schools' talent areas)
- Briefing on DSA matters and application (P5 & P6)
- Interview preparation for DSA applicants (P6)



POST PSLE ACTIVITIES

- Third Language – seed the interest in learning the language
- Art Experience – Hands-on Art Making
- Sports Education Experience - Archery
- Graduation Party
- Financial Literacy



ECG PORTAL FOR STUDENTS - MYSKILLSFUTURE

- Empower our students to embark on a journey of self-discovery and make informed education and career choices.
- Students may use the information and tools to explore various education and career pathways, and take charge of their future.
- Students had been given an account and will be allowed to explore during FTGP
- Parents may navigate the portal with your child, using your child's account and take the opportunity to begin an ECG conversation.



Singapore Education Landscape

A green banner featuring various educational icons: a guitar, musical notes, a paint palette, a microscope, a globe, a gear, a basketball, and a book.

Singapore Education Landscape

There are many education options available for the next phase of your learning.
Explore the many options open to you based on your interests and strengths.

[Load Pathways](#)[Explore Pathways](#)[Landscape Overview](#)

Explore the many options open to you based on your interests and strengths.

Load a Pathway



Possible Pathways

Express to Universities (1)

Integrated Programme to Universities (1)

Integrated Programme to Universities (2)

Specialised Independent Schools to Universities

Specialised Independent Schools to Arts Institutions

Specialised Independent Schools to Polytechnics

Express to Universities (2)

Express to Polytechnics

Express to Universities (1)

Normal Academic [N(A)] to Polytechnics via PFP

Normal Academic [N(A)] to Polytechnics via DPP

Normal Academic [N(A)] to ITE

Normal Academic [N(A)] to Polytechnics

Go

Download

Go

Download

Primary
Secondary

Ministry of Education
SkillsFuture Singapore



ENG

10:16 AM
1/2/2019

GAN ENG SENG SCHOOL

GOVERNMENT SCHOOL

SINGLE SESSION



Add to Favourite



Add to Compare



General
Information



School
Achievements



Subjects Offered



Special
Programmes



Co-Curricular
Activities



PSLE Ranges

Aggregate range of 2017 Primary 6 students posted to 2018 Secondary 1

Learn About Job Roles

Type in a job role and find out more!

Browse by Industries

Search by Keyword



Accountancy

Advertising

Aerospace

Agriculture

Air Transport

Architecture

Arts, Entertainment and Recreation

Beauty Services

Biopharmaceuticals
Manufacturing

Built Environment

Consultancy

Creative Industries (Media)

Design

Early Childhood Care and Education

Electronics

Energy and Chemicals

Energy and Power

Environmental Services

Finance

Food Manufacturing

Food Services

Healthcare

Hotel and Accommodation Services

Human Resource

Information and Communications Technology

Insurance

Landscape

Legal

Logistics

Marine and Offshore Engineering

Others

Precision Engineering

Public Service (Education)

Public Service (Others)

Public Transport

Real Estate

Retail

Sea Transport

Security

Social Service

Tourism

Wholesale Trade

PARENTS GATEWAY



- A one-stop mobile app for parents and schools available on IOS and Android
- It allows schools to send updates on programmes and activities
- It also allows parents to perform administrative functions such as providing consent for their children to participate in school activities
- Parents can use their SingPass accounts, SMS 2FA or OneKey Token1 to gain access to Parents Gateway
- RMPS will be on board from Term 2 2019



CONTACT DETAILS

Year Head (Upper Primary):
Mdm Malar Govindan (Mrs Mani)

Email Address:
malar_vizhi_govindan@schools.gov.sg



THANK YOU...

