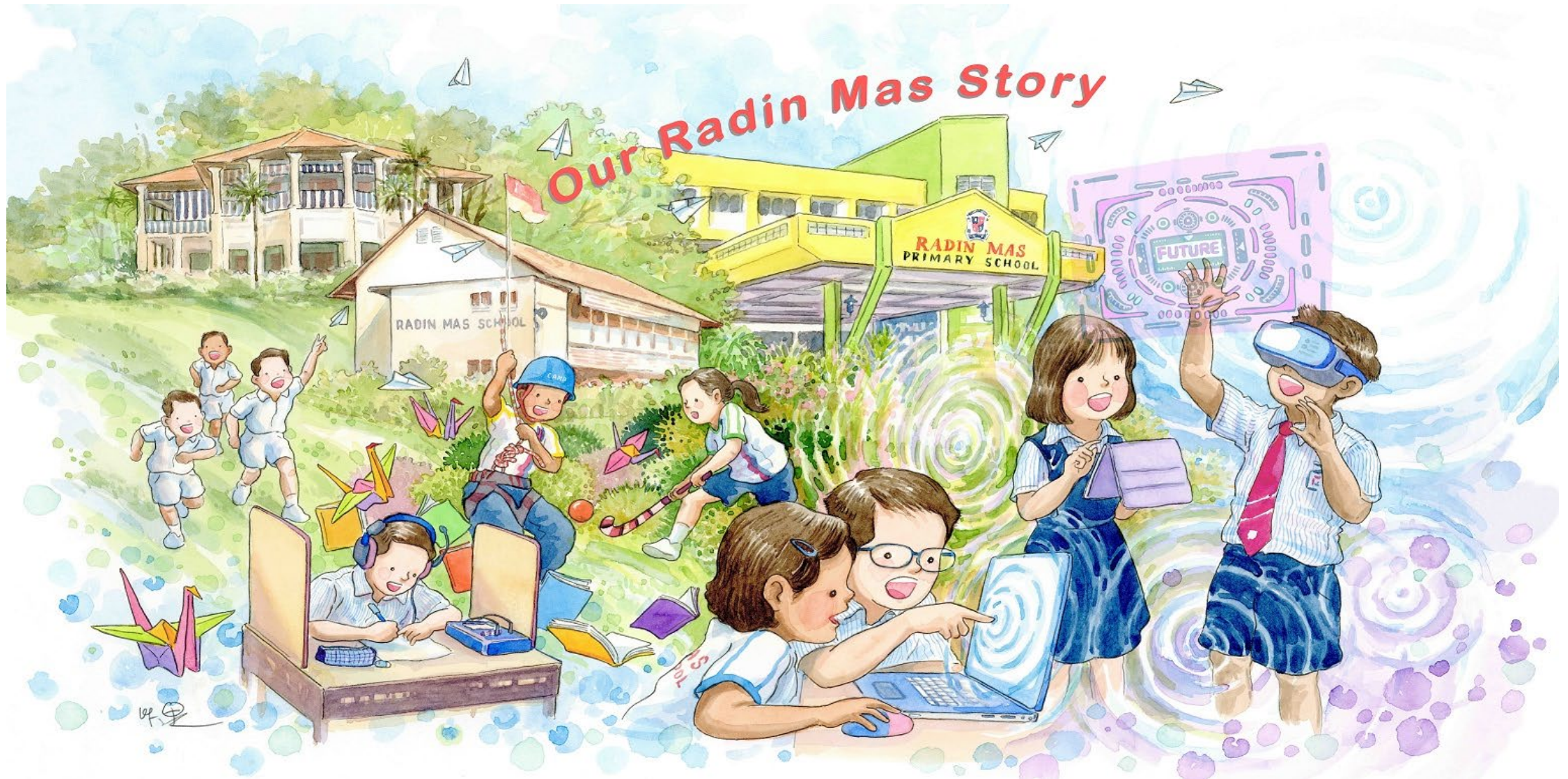
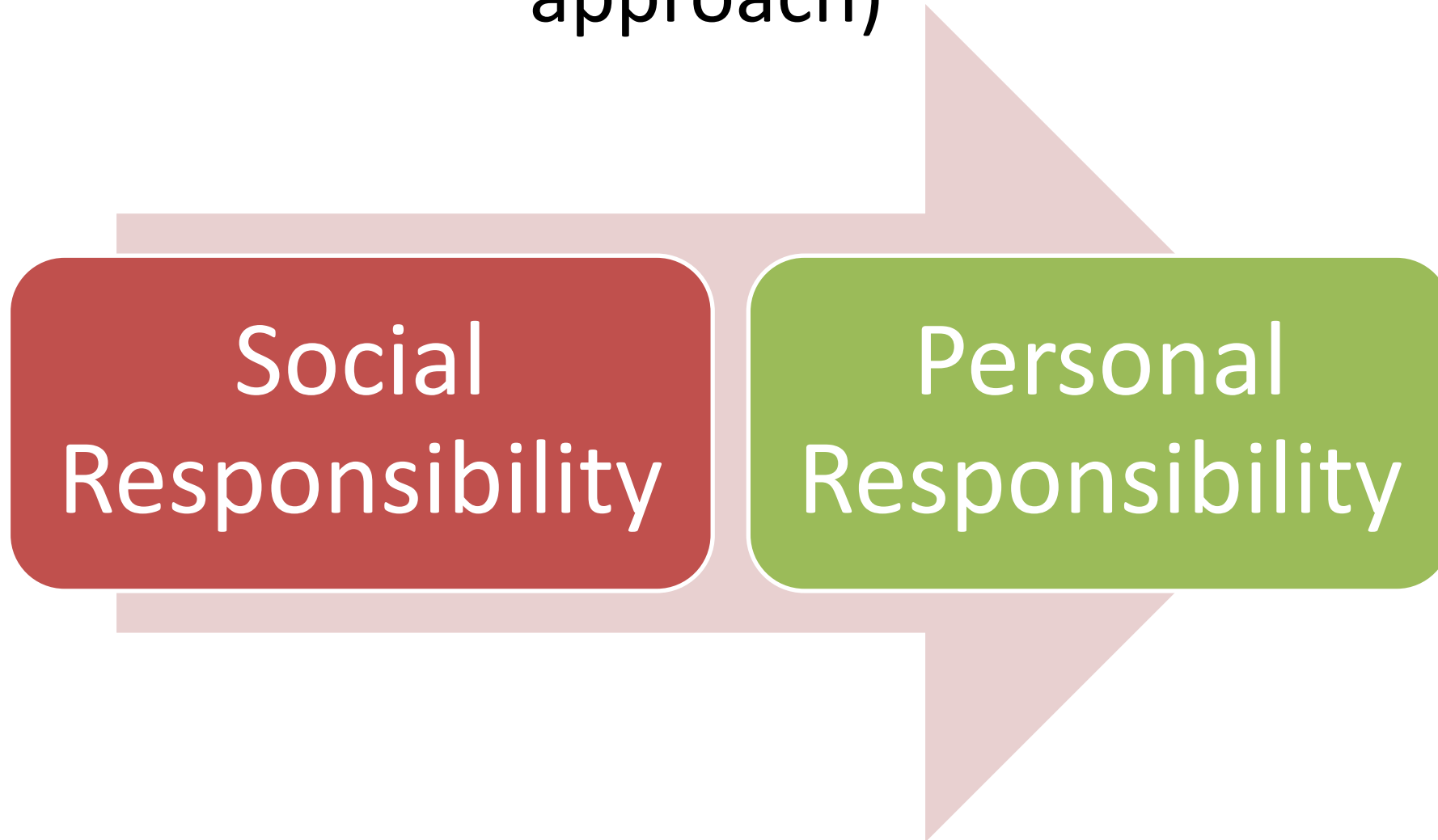


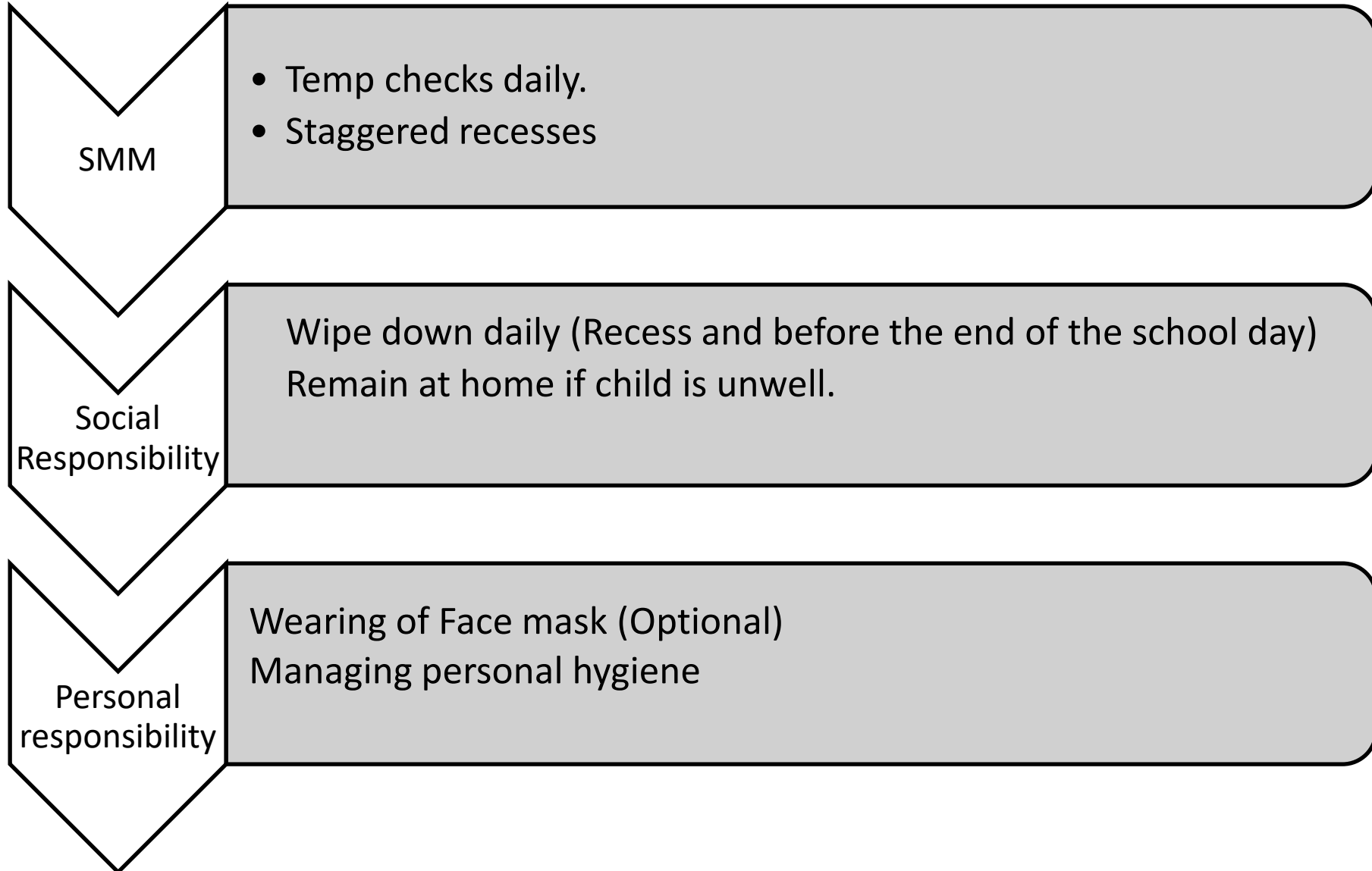
Primary 6 2023 Parent's Briefing



Managing Covid-19 together (Two-pronged approach)



Managing Covid-19 together



Our Vision

A School Where All Work Hard, Play Hard &
Make A Mark



Our Vision



Work Hard

- Holistic Development (Academic & Non Academic)
- Self-Directed Learners
- To always push themselves
- Grit/Resilience



Play Hard

- Positive school experiences.
- Combination of both structured play and unstructured play
- Build positive ties
- Develop passion, interest and talents



Make A Mark

- Discovering passion, interests and talents.
- Internalising the school values.
- Strong sense of advocacy.
- A spirit of dare and continuous learning.

Our Mission

- TO DEVELOP EACH CHILD HOLISTICALLY, EQUIPPING HIM WITH THE COMPETENCIES FOR THE FUTURE



RMPS Mission

Values (RMPS Values)

Skills (21st Century Skills)

Dispositions (Anchored on Pos ED)

Attitude and Habits (GRIT)

Our Values

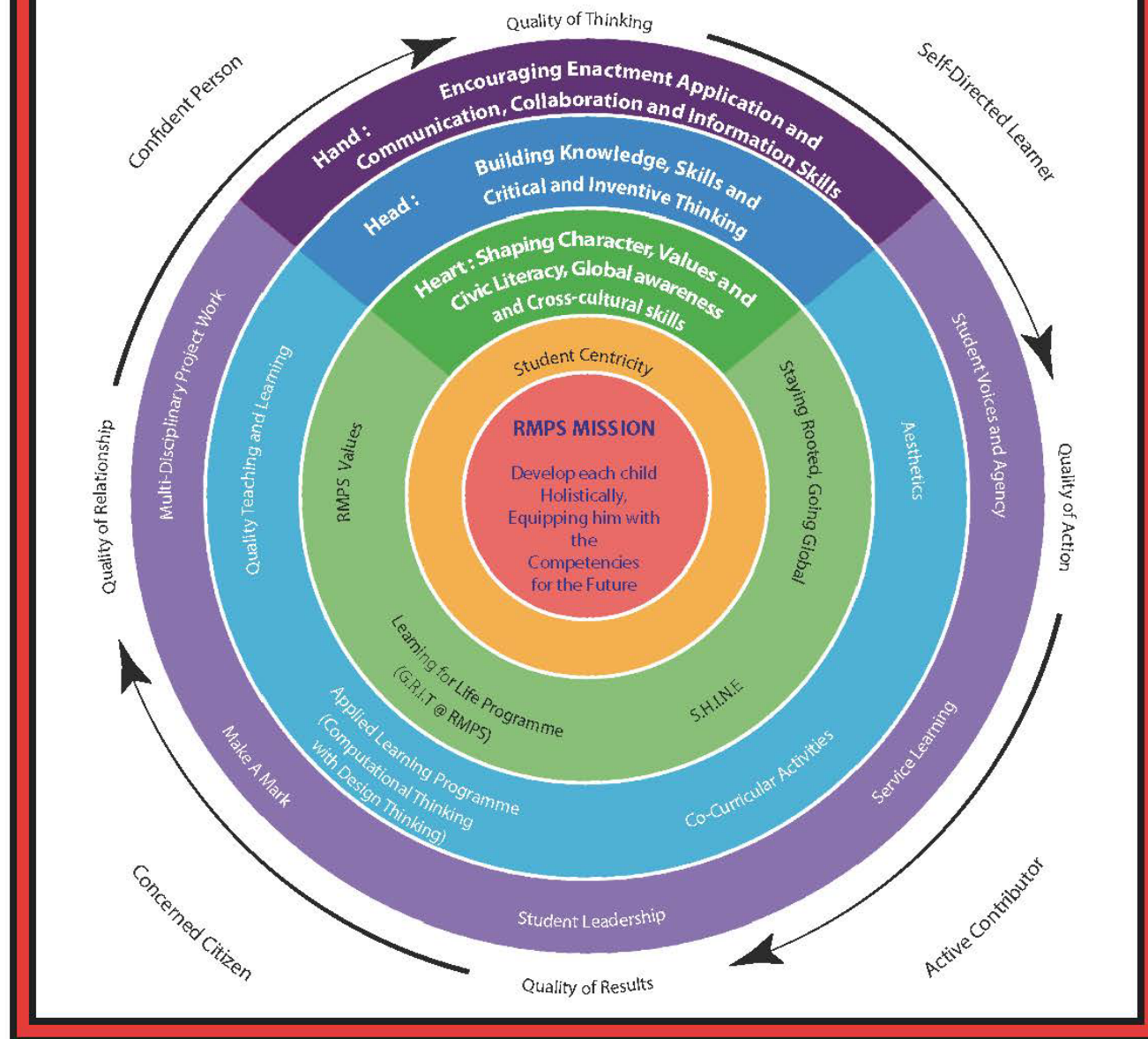
- **R**espect For Self And Others
- **A**lways Be Gracious
- **D**esire For Learning
- **I**gnite Creativity And Innovation
- **N**ever Give Up
- **M**aximize Potential
- **A**im For Excellence
- **S**tand Up For Integrity



Total Curriculum Framework

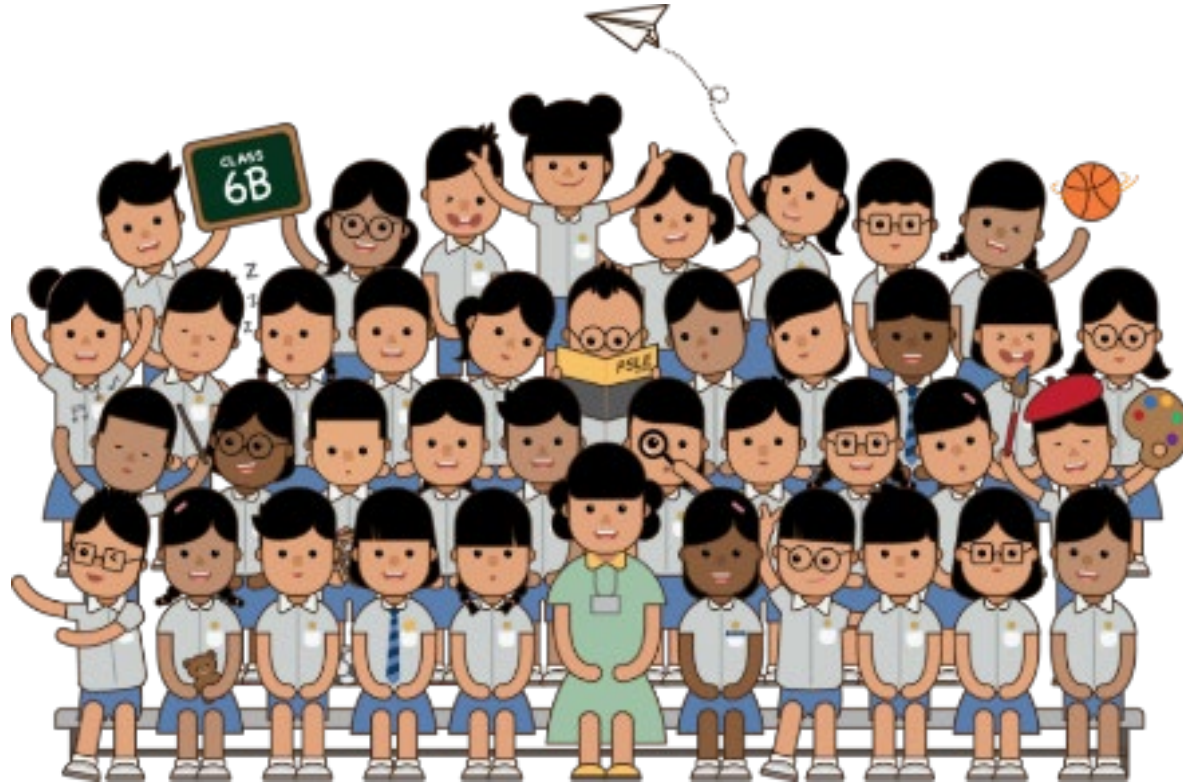
1. Unpacking of school's mission: "Develop each child ***holistically***, Equipping Him with the **Competencies For the Future**"
2. Competencies for the future seen in these three areas:
 - Heart: Shaping character and values and Civic Literacy, global awareness and cross cultural skills.
 - Head: Building knowledge and skills and critical and inventive thinking
 - Hand: Encouraging application, enactment and communication, collaboration and information skills.

Total Curriculum Framework - RMPS Experiences



CHANGES TO THE PSLE SCORING AND S1 POSTING SYSTEMS

**SUPPORTING STUDENTS AND PARENTS IN MAKING
INFORMED SCHOOL CHOICES FOR PSLE**



OVERVIEW

RECAP

- How the PSLE Scoring System Works
- How the S1 Posting System Works

SUPPORTING STUDENTS AND THEIR PARENTS IN MAKING INFORMED SCHOOL CHOICES

- Understanding the PSLE Score Ranges
- School Choice Journey



WHAT IS THE INTENT OF THE PSLE?



A useful checkpoint at the end of primary school

A fair way to determine secondary school posting



Over the years, we have been changing the education system to help our students discover and develop their strengths and interests, while moving away from an over-emphasis on academic results. Our PSLE Scoring changes reduce an over-emphasis on academic results by:

1

Reducing fine differentiation of students' examination results at a young age.

2

Recognising a student's level of achievement, regardless of how his/her peers have done.

3

Encouraging families to choose secondary schools holistically based on students' strengths, interests and abilities.

HOW THE PSLE SCORING SYSTEM WORKS



FROM T-SCORE TO SCORING BANDS

a) Reduces fine differentiation of students' examination results at a young age

- Students with similar scores in each subject are grouped into wider scoring bands measured in 8 ALs.

b) Reflects a student's individual level of achievement

- Students' ALs for each subject reflect their level of achievement, rather than how they have performed relative to their peers.

| AL | RAW MARK RANGE |
|----|----------------|
| 1 | ≥ 90 |
| 2 | 85 – 89 |
| 3 | 80 – 84 |
| 4 | 75 – 79 |
| 5 | 65 – 74 |
| 6 | 45 – 64 |
| 7 | 20 – 44 |
| 8 | < 20 |

GRADING OF FOUNDATION SUBJECT GRADES

- Foundation subject grades are graded in scoring bands from **AL A to C**.
- To derive a student's overall PSLE Score for S1 Posting, AL A to AL C for Foundation level subjects are **mapped to AL 6 to AL 8 of Standard level subjects respectively**.
- Similar to the PSLE T-score system, this mapping is based on the learning and assessment load of the subjects, and informs students of how ready they are for the curriculum in secondary school.

| FOUNDATION LEVEL AL | FOUNDATION RAW MARK RANGE | EQUIVALENT STANDARD LEVEL AL |
|------------------------|------------------------------|------------------------------------|
| A | 75 – 100 | 6 |
| B | 30 – 74 | 7 |
| C | < 30 | 8 |

4 SUBJECT ALs WILL BE ADDED TO FORM THE OVERALL PSLE SCORE

- The PSLE Score can range from 4 to 32, with 4 being the best.
- Students are placed in secondary school courses based on their PSLE Score – Express, Normal (Academic) or Normal (Technical).

| | |
|------------------------|------|
| ENGLISH LANGUAGE | AL 3 |
| MOTHER TONGUE LANGUAGE | AL 2 |
| MATHEMATICS | AL 1 |
| SCIENCE | AL 2 |
| <hr/> | |
| PSLE SCORE: 8 | |

| PLACEMENT OUTCOME | PSLE SCORE |
|-----------------------|---|
| EXPRESS | 4 – 20 |
| EXPRESS / N(A) OPTION | 21 – 22 |
| N(A) | 23 – 24 |
| N(A) / N(T) OPTION | 25 |
| N(T) | 26 – 30, with AL 7 or better in both EL <u>and</u> MA |

Express, N(A) and N(T) courses will be phased out by 2024.

ELIGIBILITY CRITERIA FOR HIGHER MOTHER TONGUE LANGUAGE (HMTL)

ELIGIBILITY CRITERIA FOR HMTL

- (i) An overall PSLE Score of 8 or better**
- or**
- (ii) An overall PSLE Score of 9 to 14 (inclusive); and attain**
 - **AL 1 / AL 2 in MTL or**
 - **Distinction / Merit in HMTL**

- The eligibility criteria for taking HMTL takes reference from past criteria.
- It ensures students can cope with the higher academic load.
- Secondary schools continue to have the flexibility to offer HMTL to students who do not meet the criteria if they:
 - have high ability and interest in MTL, and
 - are able to cope with the learning load required.

ELIGIBILITY CRITERIA FOR MOTHER TONGUE LANGUAGE (MTL) 'B' IN SECONDARY SCHOOLS

- The MTL 'B' curriculum is designed to help students in the Express and N(A) courses who face exceptional difficulty coping with MTL.

| ELIGIBILITY CRITERIA FOR MTL 'B' (FOR STUDENTS OFFERED THE EXPRESS OR N(A) COURSE) |
|---|
| AL 7 or 8 in Standard MTL or AL B or C in Foundation MTL |

- Schools have discretion to offer MTL 'B' to students who face exceptional difficulty with MTL but do not meet the eligibility criteria at Secondary 1 based on PSLE results.
- As students progress in secondary school, they may also take up MTL 'B' if they are assessed to be suitable by their schools.

SUBJECT-BASED BANDING (SECONDARY)

[SBB (SEC)] ELIGIBILITY CRITERIA

SBB (SEC) PROVIDES STUDENTS POSTED TO THE N(A) AND (NT) COURSES WITH **GREATER FLEXIBILITY** TO TAKE VARIOUS SUBJECTS AT A MORE DEMANDING LEVEL BASED ON THEIR SUBJECT-SPECIFIC STRENGTHS.

UNDER THE NEW PSLE SCORING SYSTEM, THE SBB (SEC) ELIGIBILITY CRITERIA IS AS FOLLOWS.

| FOR STUDENTS POSTED TO THE N(A) OR N(T) COURSE | |
|---|---------------------------|
| PSLE SUBJECT GRADE | OPTION TO TAKE SUBJECT AT |
| AL 5 or better in a Standard level subject | Express level |
| AL 6 or better in a Standard level subject <u>OR</u> AL A in a Foundation level subject | N(A) level |

AS STUDENTS PROGRESS IN SECONDARY SCHOOL, THEY CONTINUE TO HAVE OPPORTUNITIES AT VARIOUS JUNCTURES TO TAKE SUBJECTS AT MORE DEMANDING LEVELS BASED ON THEIR PERFORMANCE IN SCHOOL.

STUDENTS POSTED TO THE EXPRESS COURSE WILL TAKE ALL THEIR SUBJECTS AT THE EXPRESS LEVEL.

SUBJECT-BASED BANDING (SECONDARY) [SBB (SEC)] ELIGIBILITY CRITERIA

N(A)-Level
English

Express-
Level
Math

N(A)-Level
Mother
Tongue

N(A)-Level
Science

EXAMPLE:

ENGLISH
LANGUAGE AL6

MOTHER TONGUE
LANGUAGE AL6

MATHEMATICS AL5

SCIENCE AL6

Offered N(A) course

PSLE SCORE: 23₂₁



FULL SUBJECT-BASED BANDING (FULL SBB)

THIS IS IN LINE WITH THE CHANGES TO PSLE SCORING TO RECOGNISE EACH STUDENT'S OWN LEVEL OF ACHIEVEMENT AND ENCOURAGE THEM TO CHOOSE SECONDARY SCHOOLS THAT FIT THEIR STRENGTHS AND INTERESTS.

FULL SBB AIMS TO FURTHER NURTURE THE JOY OF LEARNING AND DEVELOP MULTIPLE PATHWAYS TO CATER TO THE DIFFERENT STUDENT PROFILES. THROUGH FULL SBB, WE WANT STUDENTS TO:



- have greater ownership of their education, and learn each subject at the level that best caters to their overall strengths, interests and learning needs, and
- have more opportunities to interact with friends of different strengths and interests.
- not be held back by negative self-concepts and labelling.
- have increased access to post-sec pathways, while having strong fundamentals in their subjects so that they are able to thrive in the pathway they choose.

FULL SUBJECT-BASED BANDING (FULL SBB)

THE FOLLOWING ARE CHANGES THAT STUDENTS WILL EXPERIENCE FROM FULL SBB:

- Removal of Express, N(A) and N(T) courses
- Mixed form classes
- Common Curriculum subjects
- Offering subjects at a more demanding level, including Humanities subjects
- Common National Examinations
- Post-secondary Admissions

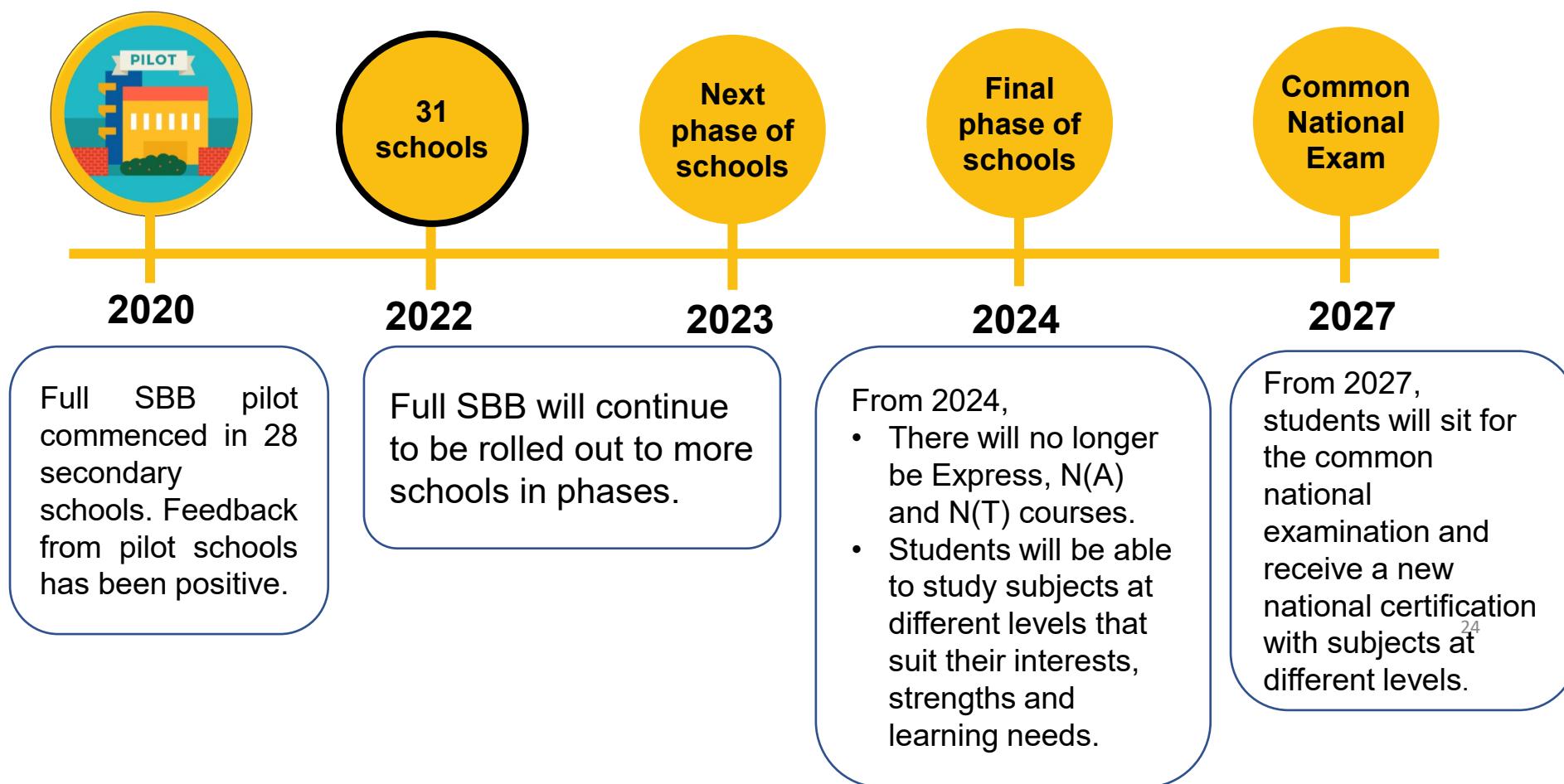


FULL SUBJECT-BASED BANDING (FULL SBB) TIMELINE

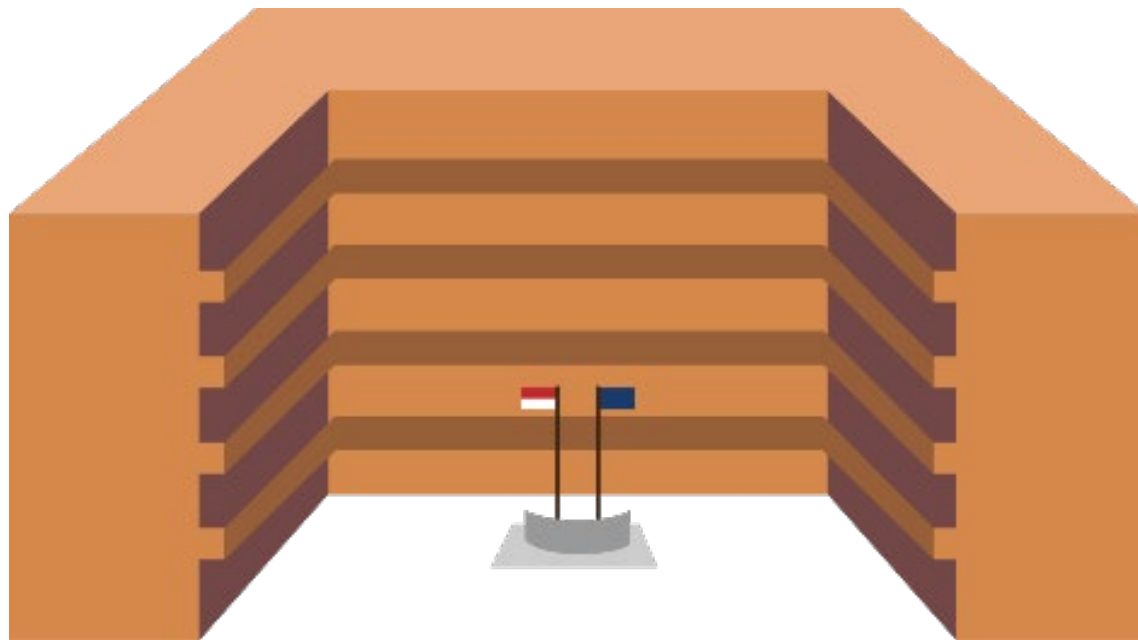
Link to PSLE-FSBB Microsite



<https://go.gov.sg/pslefsbb>



HOW THE S1 POSTING SYSTEM WORKS



CHOICE ORDER OF SCHOOLS MATTERS MORE

- Students continue to have **six choices** in selecting their secondary schools.
- Similar to past years, students continue to be posted to a secondary school based on **academic merit, i.e., PSLE Score**, and their **school choice order**.
- If there are two or more students with the same PSLE Score vying for the last remaining place(s) in a school, the following tie-breakers will be used in the following order:
 1. **CITIZENSHIP**
 2. **CHOICE ORDER OF SCHOOLS (New tie-breaker from 2021 onwards)**
 3. **COMPUTERISED BALLOTING**
- The new tie-breaker based on school choice order recognises the different considerations that families have in making school choices.

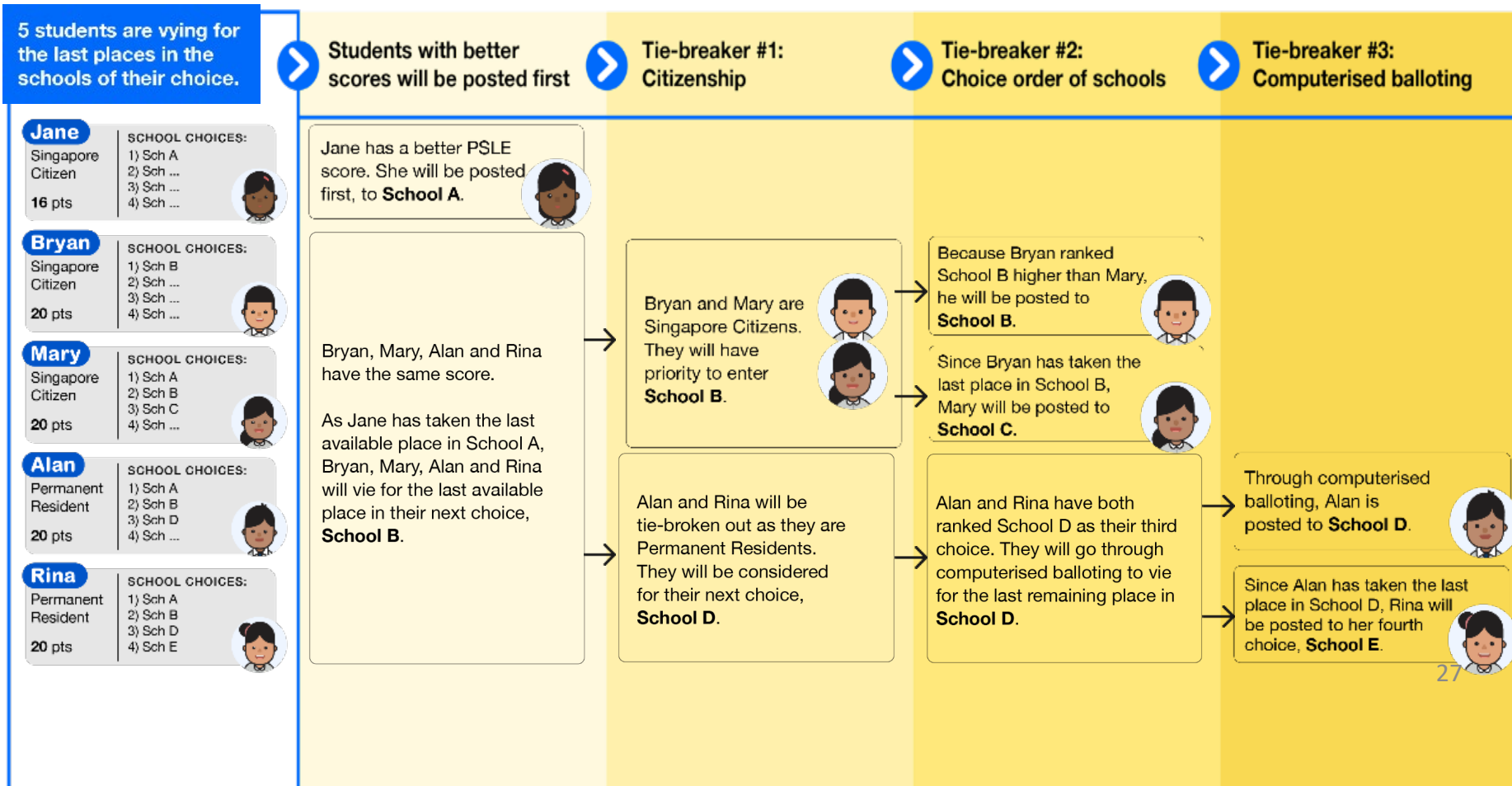


Tie-breakers

in the new S1 Posting System

Tie-breakers are used only if there are two or more students with the same PSLE Score vying for the last available place(s) in a school.

Here's a simplified example.

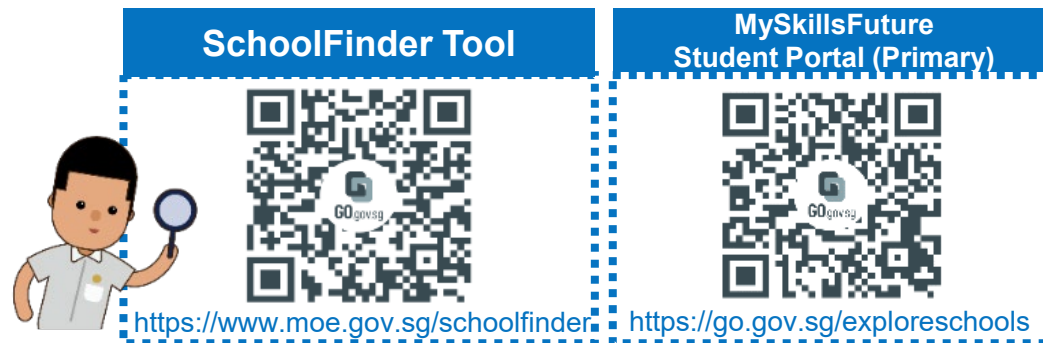


PSLE SCORE RANGES FOR INDIVIDUAL SECONDARY SCHOOLS



PSLE SCORE RANGES FOR ALL SECONDARY SCHOOLS

- Use the PSLE Score ranges as a reference alongside other important factors, such as the school's distinctive programmes, Co-Curricular Activities (CCA), culture, ethos, and proximity to home when shortlisting school choices that would best fit a student's educational needs.
- A school's PSLE Score range (including Cut-Off-Point) for a particular year is not pre-determined before the posting, and may vary from year to year, depending on the cohort's PSLE results and their school choices in that year's S1 Posting Exercise.



PSLE SCORE RANGES FOR INDIVIDUAL SECONDARY SCHOOLS

The PSLE Score range refers to the PSLE Score of the first and last student admitted to a particular school in the previous year via the **S1 Posting Exercise**. This shows the range of student profiles who enter each school.

Example

XX Secondary School
PSLE Score range of 2021

| | | |
|--------------------|----|----|
| Express | 15 | 20 |
| Normal (Academic) | 21 | 24 |
| Normal (Technical) | 25 | 28 |

PSLE Score of the first student posted into the school in the respective courses

PSLE Score of the last student posted into the school in the respective courses [i.e., the school's **Cut-Off Point (COP)**]

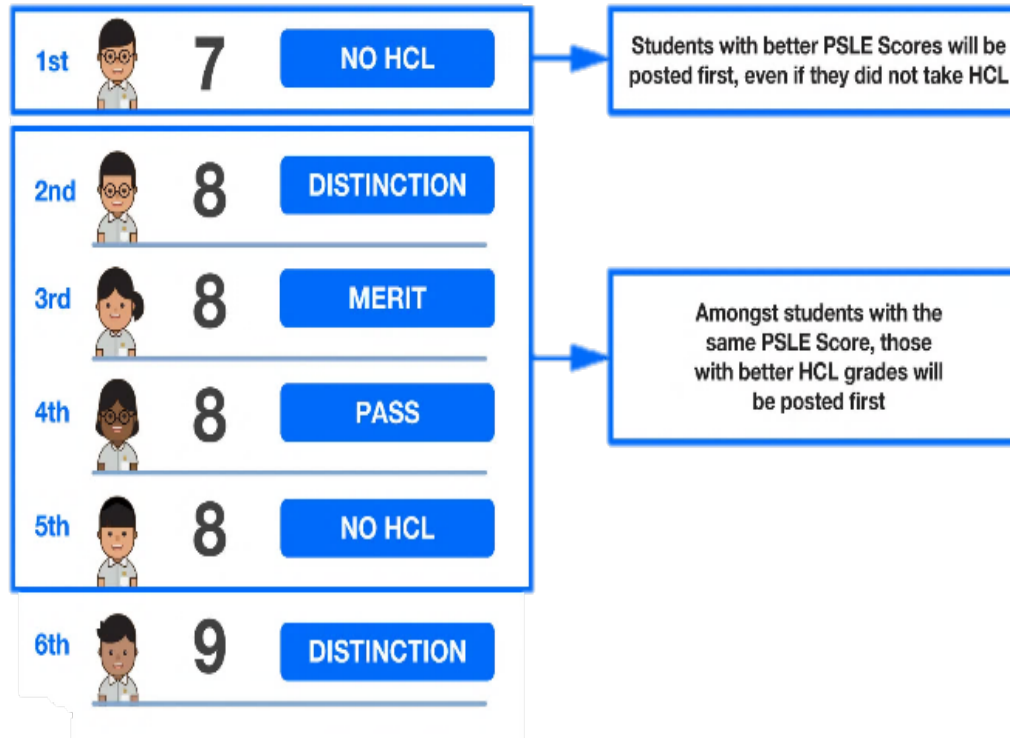
USE OF HIGHER CHINESE LANGUAGE (HCL) FOR ADMISSION INTO SPECIAL ASSISTANCE PLAN (SAP) SCHOOLS



HCL POSTING ADVANTAGE FOR ENTRY TO SAP SCHOOLS WILL CONTINUE

Students who obtained a Distinction/Merit/Pass for HCL at the PSLE and an overall PSLE Score of 14 or better will receive a posting advantage when applying to SAP schools.

Students will be considered for admission to SAP schools in the following order:



- Students' HCL results are denoted as 'D' (Distinction), 'M' (Merit) or 'P' (Pass).
- Students who obtain (i) a Distinction / Merit / Pass in HCL and (ii) a PSLE Score of 14 or better are eligible for posting advantage to SAP schools.
- Students are ranked taking into account their performance in HCL.
- This posting advantage applies before the tie-breakers for S1 Posting.

EXAMPLE OF AN SAP SCHOOL's PSLE SCORE RANGE

While students need not take HCL to enter SAP schools, students who pass HCL receive a posting advantage for admission. To reflect this, the PSLE Score ranges of SAP schools include the HCL grades of the first and last student admitted in the previous year via S1 Posting.

Example

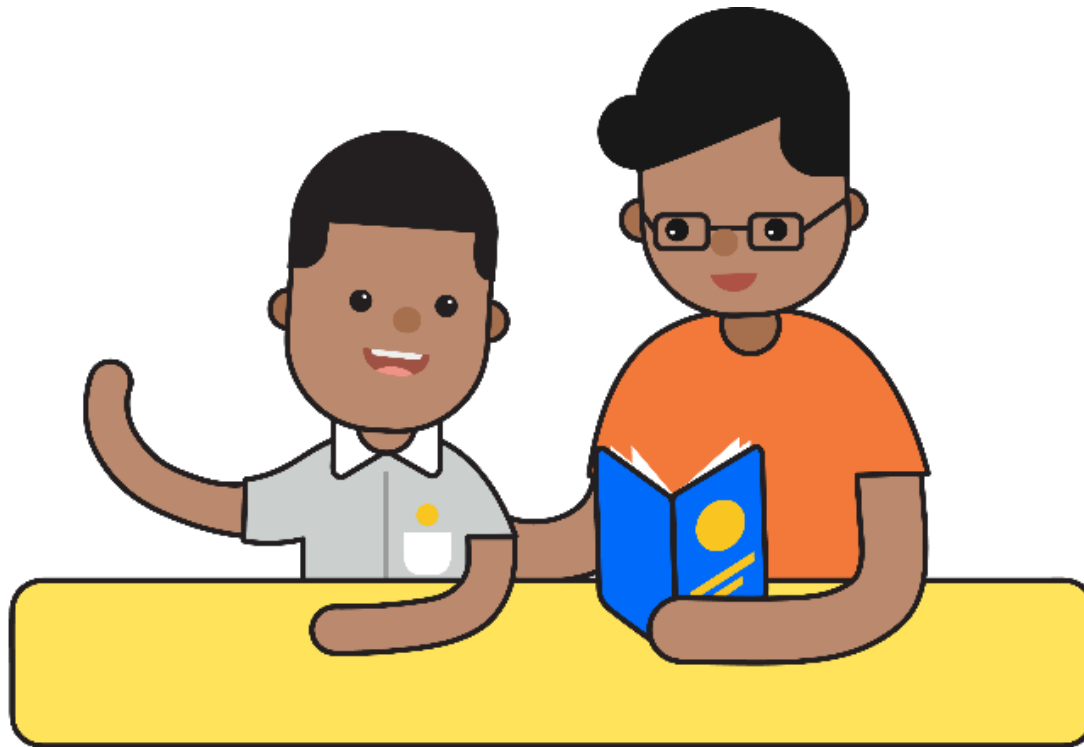
XX Secondary School
PSLE Score range of 2021

| | |
|--------------------|----------------|
| Express | 5 (D) – 12 (P) |
| Normal (Academic) | |
| Normal (Technical) | |

PSLE Score and HCL grade of the first student posted into the school in the Express course

PSLE Score and HCL grade of the last student posted into the school in the Express course [i.e. the school's Cut-Off Point (COP)]

CHOOSING SUITABLE SECONDARY SCHOOLS WITH YOUR CHILD



SCHOOL CHOICE JOURNEY

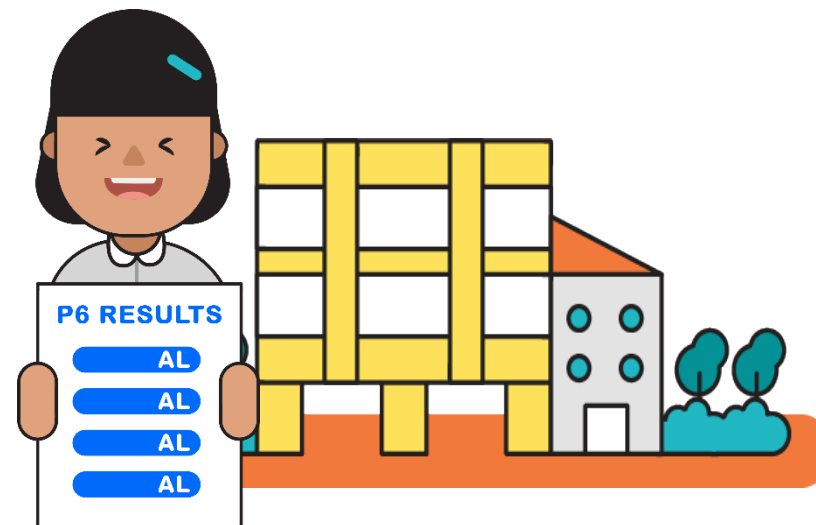
- The PSLE Score ranges are a **useful reference point** for parents and students to consider secondary schools.
- Use this information, together with other **important factors** such as the secondary schools' distinctive programmes, CCAs, ethos and cultures, to shortlist schools that would best fit the educational needs of the student.
- If your child has specific talents and strengths beyond the PSLE (e.g. areas such as sports, performing arts and leadership), consider the **Direct School Admission-Secondary (DSA-Sec)** as an alternative admission pathway to access secondary schools that have talent development programmes in these areas.



PREPARING FOR THE S1 POSTING EXERCISE

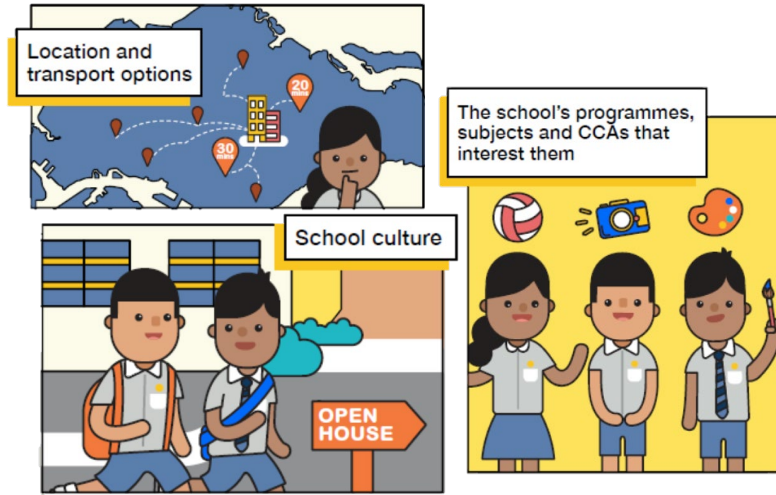


Use all 6 options with a range of Cut-off Points as this will increase your child's chances of being posted to a school of their choice.



Take reference from schools' PSLE Score ranges, which serves as a guide for you and your child to shortlist school choices. Consider at least 2-3 schools where your child's PSLE Score is better than the school's Cut-off Point.

PREPARING FOR THE S1 POSTING EXERCISE



Shortlist schools that offer programmes that cater to the your child's strengths and interests, and that provide suitable learning environments.



Rank your child's preferred school higher in the school choice order. This will increase your child's chances of being posted to that school, if tie-breakers are required.

PREPARING FOR THE S1 POSTING EXERCISE



**SCHOOL
FINDER**
MySKILLSfuture

- Release of **PSLE** results
- Submission of **Secondary 1 Option Form**



- Release of **S1 Posting** results



TIPS FOR PARENTS!

Be open and flexible when discussing your child's preferences, needs and choices.

Manage your own expectations and do not project these expectations onto your child.

Have regular conversations with your child to understand more about his/her interests and aspirations.



Affirm your child and offer support when he/she shares his/her plans with you.

FIND OUT MORE ON THE PSLE-FSBB MICROSITE!



<https://go.gov.sg/pslefsbb>



OTHER RESOURCES

1 SchoolFinder
Tool

SCHOOL
FINDER



[https://go.gov.sg/
secschoolfinder](https://go.gov.sg/secschoolfinder)

2 “Welcome to
Secondary School”
video



[https://go.gov.sg/welcome-to-secondary-
school](https://go.gov.sg/welcome-to-secondary-school)

3 Secondary School
Education Booklet



[https://go.gov.sg/
psle-sec-sch-
brochure](https://go.gov.sg/psle-sec-sch-brochure)

4 ECG Parent Guide



[https://go.gov.sg/
parent-guide](https://go.gov.sg/parent-guide)

Conclusion

Wishing you and your child a safe and wonderful year filled with joy and growth ahead!

