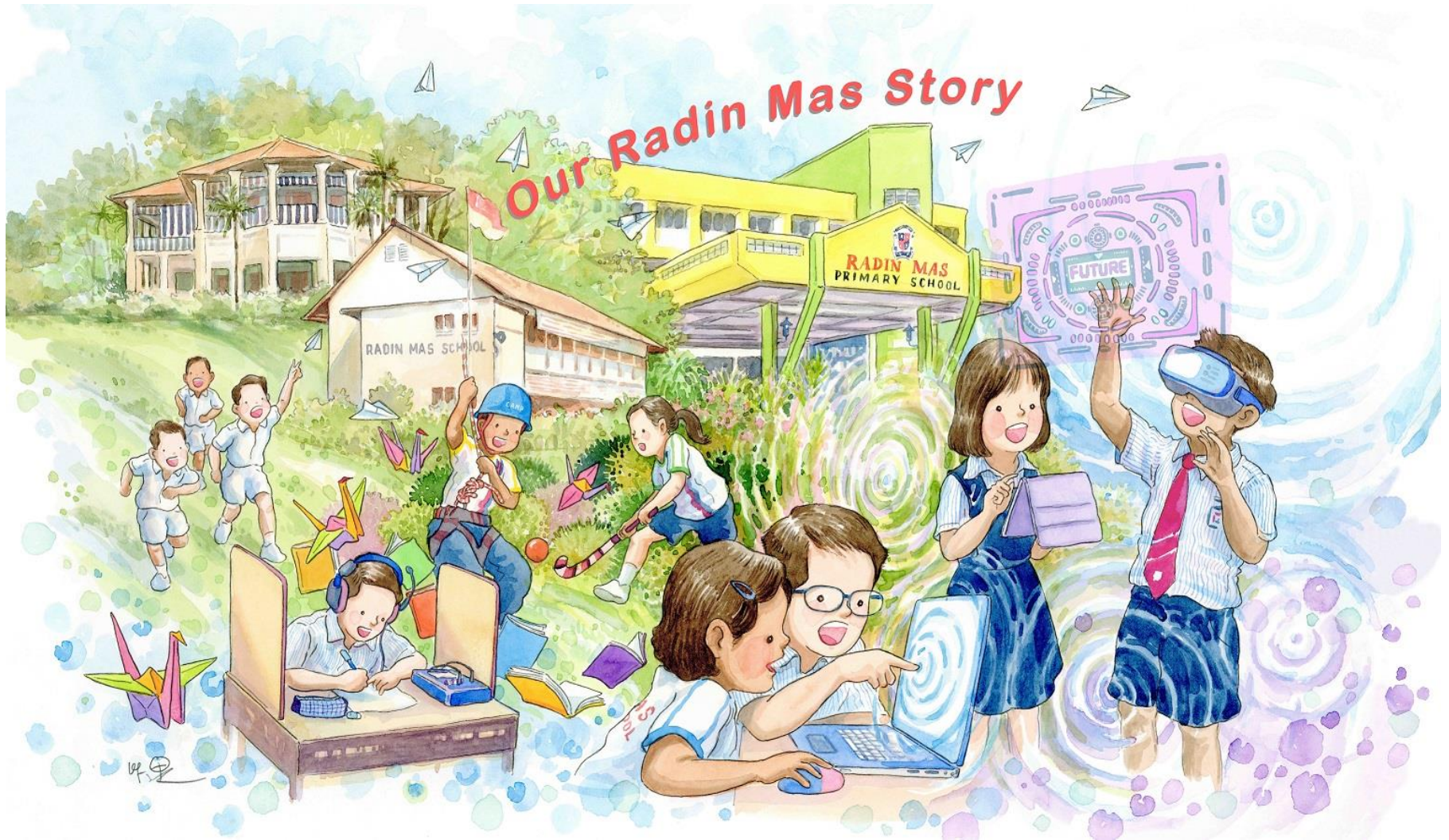


# Primary 5 2023 Parent's Briefing



# Managing Covid-19 together (Two-pronged approach)



The diagram features a large, light pink arrow pointing to the right. Inside the arrow's shaft are two rounded rectangular boxes. The left box is red and contains the text 'Social Responsibility'. The right box is green and contains the text 'Personal Responsibility'. The entire graphic is set against a white background.

**Social  
Responsibility**

**Personal  
Responsibility**

# Managing Covid-19 together

SMM

- Temperature checks daily
- Staggered recesses

Social  
Responsibility

- Wipe down daily (Recess and before the end of the school day)
- Remain at home if child is unwell

Personal  
responsibility

- Wearing of Face mask (optional)
- Managing personal hygiene

# Our Vision

A School Where All Work Hard, Play Hard &  
Make A Mark



# Our Vision



## Work Hard

- Holistic Development (Academic & Non Academic)
- Self-Directed Learners
- To always push themselves
- Grit/Resilience



## Play Hard

- Positive school experiences.
- Combination of both structured play and unstructured play
- Build positive ties
- Develop passion, interest and talents



## Make A Mark

- Discovering passion, interests and talents.
- Internalising the school values.
- Strong sense of advocacy.
- A spirit of dare and continuous learning.



# Our Mission

- TO DEVELOP EACH CHILD HOLISTICALLY,  
EQUIPPING HIM WITH THE COMPETENCIES  
FOR THE FUTURE



# RMPS Mission

Values (RMPS Values)

Skills (21<sup>st</sup> Century Skills)

Dispositions (Anchored on Pos ED)

Attitude and Habits (GRIT)

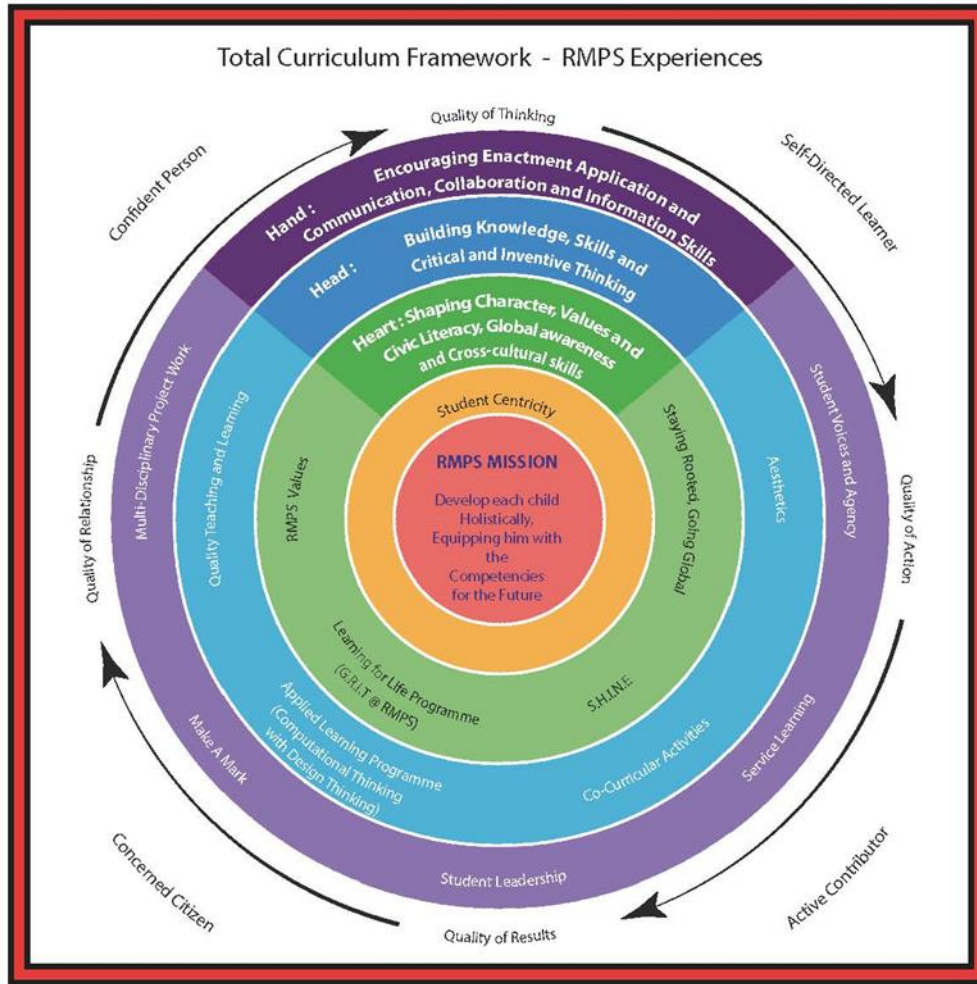
# Our Values

- **R**espect For Self And Others
- **A**lways Be Gracious
- **D**esire For Learning
- **I**gnite Creativity And Innovation
- **N**ever Give Up
- **M**aximize Potential
- **A**im For Excellence
- **S**tand Up For Integrity





# Total Curriculum Framework



1. Unpacking of school's mission: "Develop each child **holistically**, Equipping Him with the **Competencies For the Future**"
2. Competencies for the future seen in these three areas:
  - Heart: Shaping character and values and Civic Literacy, global awareness and cross cultural skills.
  - Head: Building knowledge and skills and critical and inventive thinking
  - Hand: Encouraging application, enactment and communication, collaboration and information skills.

# Learn for Life

## Key initiatives at P5

- Removal of SA 1 and only SA 2.
- Introduction of Weighted Assessments across three terms.

Term 1 (WA)	Term 2 (WA)	Term 3 (WA)	SA 2
10%	15%	10%	65%

- Formative assessments to support these weighted assessment.

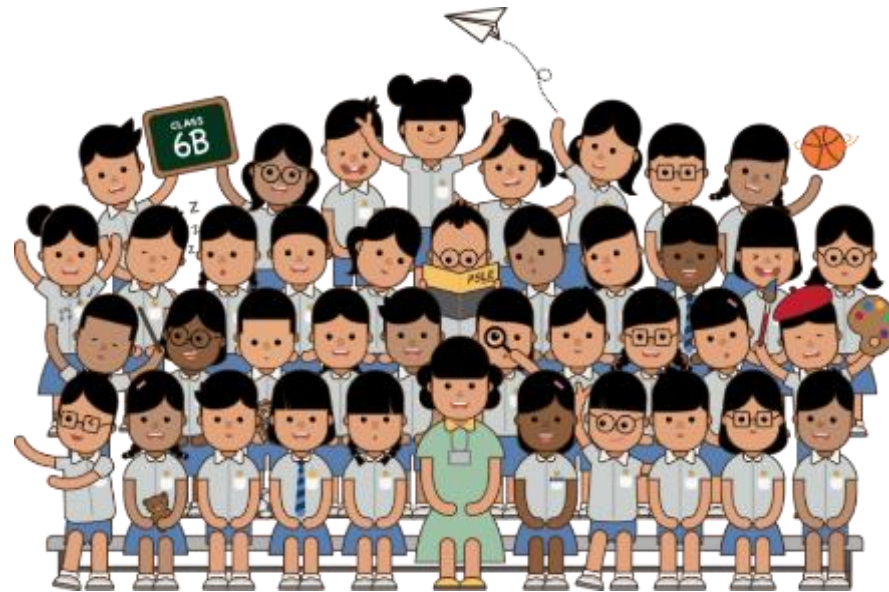
# Key initiatives at P5

- mixed-ability class allocation with academic ability banding for key subjects
- mirrors Full Subject Based Bandings (FSBB) in Secondary School from 2024 with streaming abolished and replaced by Full Subject Based Bandings.
- MT/Maths Common Banding (to support and stretch students)
- students who require additional academic support may be placed in classes that will better support their learning and development
- builds on students' learning and social experiences from P1 to P4

# Key initiatives at P5

- Will be in the same class for 2 years to build class rapport and synergy. Important support structure to prepare the students for PSLE in 2024.
- FTs to follow up for 2 years.
- Secondary School Fair to incorporate P5s to help parents and students in knowing more about the offering at various secondary schools. Help in DSA next year.

# CHANGES TO THE PSLE SCORING AND S1 POSTING SYSTEMS



© MINISTRY OF EDUCATION, COMMUNICATIONS AND ENGAGEMENT GROUP, 2021



# WHAT IS THE INTENT OF THE PSLE?



**A useful checkpoint at the end of primary school**

**A fair way to determine secondary school posting**



Over the years, we have been changing the education system to help our students discover and develop their strengths and interests, while moving away from an over-emphasis on academic results. Our PSLE Scoring changes reduce an over-emphasis on academic results by:

1

**Reducing fine differentiation of students' examination results at a young age.**

2

**Recognising a student's level of achievement, regardless of how his/her peers have done.**

3

**Encouraging families to choose secondary schools holistically based on students' strengths, interests and abilities.**

# HOW THE PSLE SCORING SYSTEM WORKS



# FROM T-SCORE TO SCORING BANDS

**a) Reduces fine differentiation of students' examination results at a young age**

- Students with similar scores in each subject are grouped into wider scoring bands measured in 8 ALs.

**b) Reflects a student's individual level of achievement**

- Students' ALs for each subject reflect their level of achievement, rather than how they have performed relative to their peers.

AL	RAW MARK RANGE
1	$\geq 90$
2	85 – 89
3	80 – 84
4	75 – 79
5	65 – 74
6	45 – 64
7	20 – 44
8	$< 20$

## GRADING OF FOUNDATION SUBJECT GRADES

- Foundation subject grades are graded in scoring bands from **AL A to C**.
- To derive a student's overall PSLE Score for S1 Posting, AL A to AL C for Foundation level subjects are **mapped to AL 6 to AL 8 of Standard level subjects respectively**.
- Similar to the PSLE T-score system, this mapping is based on the learning and assessment load of the subjects, and informs students of how ready they are for the curriculum in secondary school.

FOUNDATION LEVEL AL	FOUNDATION RAW MARK RANGE	EQUIVALENT STANDARD LEVEL AL
A	75 – 100	6
B	30 – 74	7
C	< 30	8

## 4 SUBJECT ALs WILL BE ADDED TO FORM THE OVERALL PSLE SCORE

- The PSLE Score can range from 4 to 32, with 4 being the best.
- Students are placed in secondary school courses based on their PSLE Score – Express, Normal (Academic) or Normal (Technical).

ENGLISH LANGUAGE	AL 3
MOTHER TONGUE LANGUAGE	AL 2
MATHEMATICS	AL 1
SCIENCE	AL 2
<hr/>	
<b>PSLE SCORE: 8</b>	

PLACEMENT OUTCOME	PSLE SCORE
EXPRESS	4 – 20
EXPRESS / N(A) OPTION	21 – 22
N(A)	23 – 24
N(A) / N(T) OPTION	25 <sup>18</sup>
N(T)	26 – 30, with AL 7 or better in both EL <u>and</u> MA

*Express, N(A) and N(T) courses will be phased out by 2024.*



# ELIGIBILITY CRITERIA FOR HIGHER MOTHER TONGUE LANGUAGE (HMTL)

## ELIGIBILITY CRITERIA FOR HMTL

**(i) An overall PSLE Score of 8 or better**

**or**

**(ii) An overall PSLE Score of 9 to 14 (inclusive); and  
attain**

- **AL 1 / AL 2 in MTL or**
- **Distinction / Merit in HMTL**

- The eligibility criteria for taking HMTL takes reference from past criteria.
- It ensures students can cope with the higher academic load.
- Secondary schools continue to have the flexibility to offer HMTL to students who do not meet the criteria if they:
  - have high ability and interest in MTL, and
  - are able to cope with the learning load required.

## ELIGIBILITY CRITERIA FOR MOTHER TONGUE LANGUAGE (MTL) 'B' IN SECONDARY SCHOOLS

- The MTL 'B' curriculum is designed to help students in the Express and N(A) courses who face exceptional difficulty coping with MTL.

**ELIGIBILITY CRITERIA FOR MTL 'B'**  
**(FOR STUDENTS OFFERED THE EXPRESS OR N(A)**  
**COURSE)**

**AL 7 or 8** in Standard MTL  
or  
**AL B or C** in Foundation MTL

- Schools have discretion to offer MTL 'B' to students who face exceptional difficulty with MTL but do not meet the eligibility criteria at Secondary 1 based on PSLE results.
- As students progress in secondary school, they may also take up MTL 'B' if they are assessed to be suitable by their schools.

## SUBJECT-BASED BANDING (SECONDARY) [SBB (SEC)] ELIGIBILITY CRITERIA

SBB (Sec) provides students posted to the N(A) and (NT) courses with **greater flexibility** to take various subjects at a more demanding level based on their subject-specific strengths.

Under the new PSLE scoring system, the SBB (sec) eligibility criteria is as follows:

FOR STUDENTS POSTED TO THE N(A) OR N(T) COURSE	
PSLE SUBJECT GRADE	OPTION TO TAKE SUBJECT AT
AL 5 or better in a Standard level subject	Express level
AL 6 or better in a Standard level subject <u>OR</u> AL A in a Foundation level subject	N(A) level

As students progress in secondary school, they continue to have opportunities at various junctures to take subjects at more demanding levels based on their performance in school.

Students posted to the express course will take all their subjects at the express level.

## SUBJECT-BASED BANDING (SECONDARY) [SBB (SEC)] ELIGIBILITY CRITERIA

N(A)-Level  
English

Express-  
Level  
Math

N(A)-Level  
Mother  
Tongue

N(A)-Level  
Science



### EXAMPLE:

ENGLISH LANGUAGE	AL6
---------------------	-----

MOTHER TONGUE LANGUAGE	AL6
---------------------------	-----

MATHEMATICS	AL5
-------------	-----

SCIENCE	AL6
---------	-----

Offered N(A) course

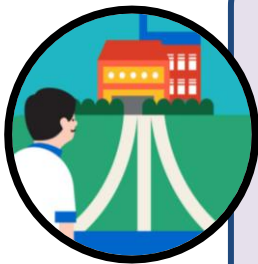
**PSLE SCORE: 23**

22

## FULL SUBJECT-BASED BANDING (FULL SBB)

This is in line with the changes to PSLE scoring to recognise each student's own level of achievement and encourage them to choose secondary schools that fit their strengths and interests.

Full SBB aims to further nurture the joy of learning and develop multiple pathways to cater to the different student profiles. Through full SBB, we want students to:



- have greater ownership of their education, and learn each subject at the level that best caters to their overall strengths, interests and learning needs, and
- have more opportunities to interact with friends of different strengths and interests.
- not be held back by negative self-concepts and labelling.
- have increased access to post-sec pathways, while having strong fundamentals in their subjects so that they are able to thrive in the pathway they choose.



# FULL SUBJECT-BASED BANDING (FULL SBB)

The following are changes that students will experience from full SBB:

- Removal of Express, N(A) and N(T) courses
- Mixed form classes
- Common Curriculum subjects
- Offering subjects at a more demanding level, including Humanities subjects
- Common National Examinations
- Post-secondary Admissions

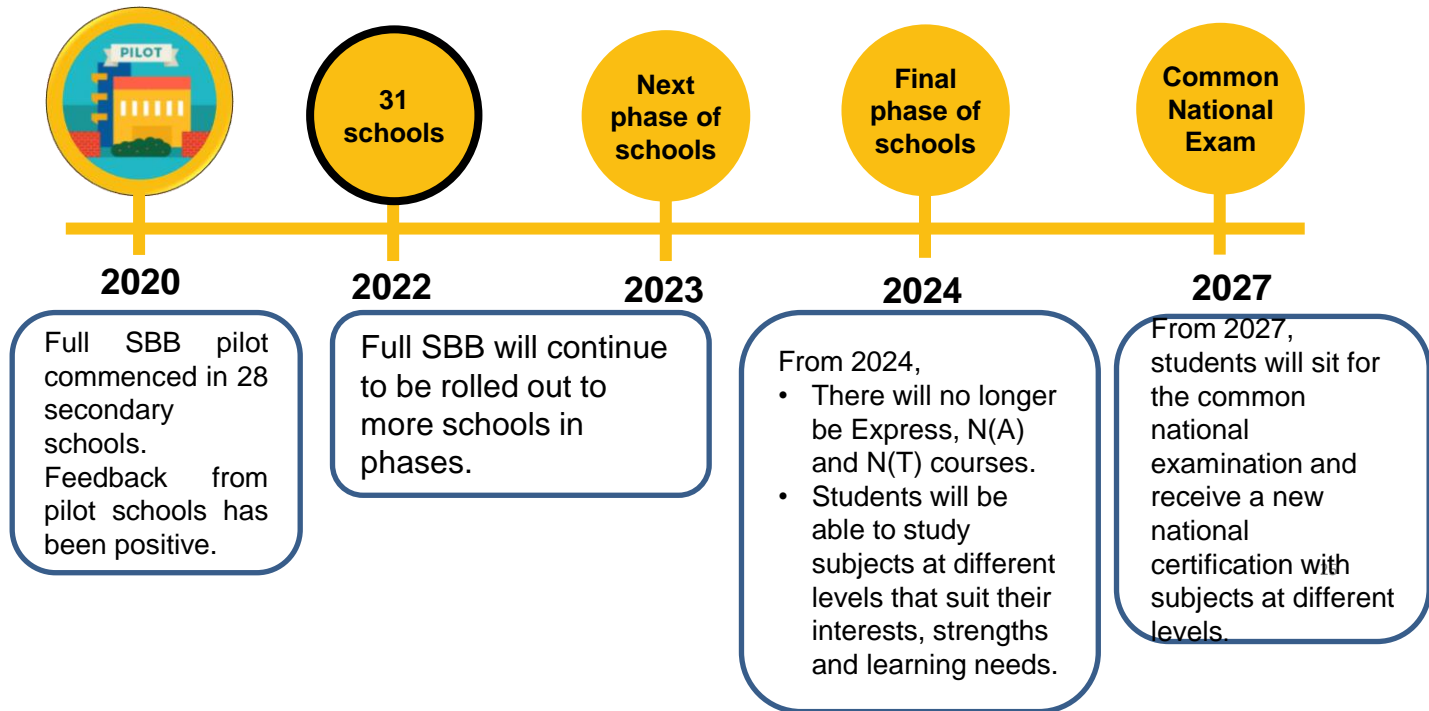


# FULL SUBJECT-BASED BANDING (FULL SBB) TIMELINE

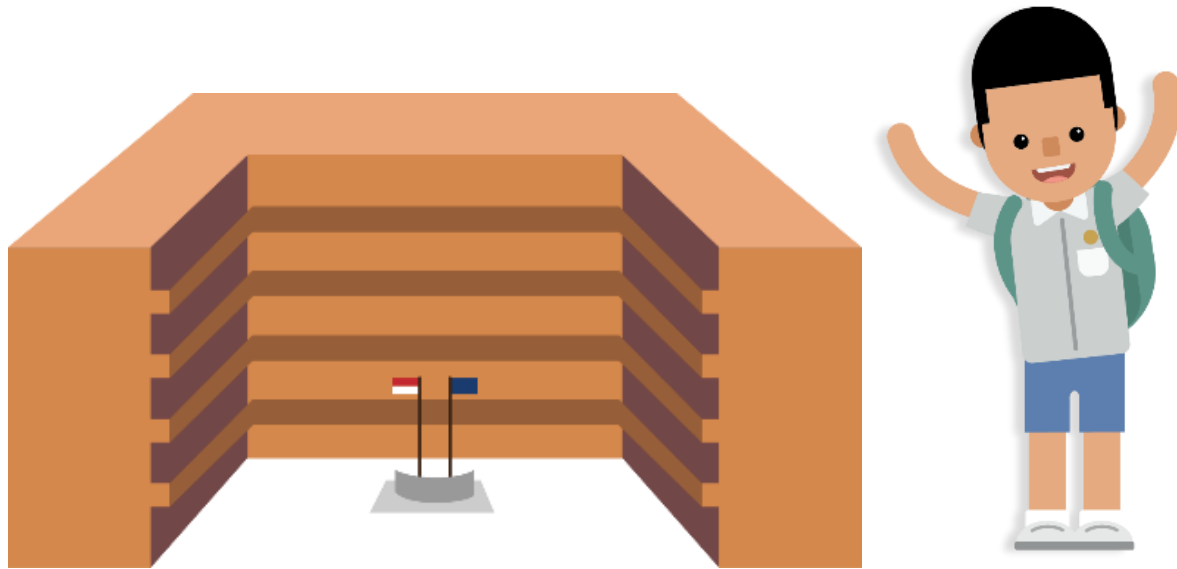
Link to PSLE-FSBB Microsite



<https://go.gov.sg/pslefsbb>



## HOW THE S1 POSTING SYSTEM WORKS



# CHOICE ORDER OF SCHOOLS MATTERS MORE

- Students continue to have **six choices** in selecting their secondary schools.
- Similar to past years, students continue to be posted to a secondary school based on **academic merit, i.e., PSLE Score**, and their **school choice order**.
- If there are two or more students with the same PSLE Score vying for the last remaining place(s) in a school, the following tie-breakers will be used in the following order:
  1. CITIZENSHIP
  2. CHOICE ORDER OF SCHOOLS (New tie-breaker from 2021 onwards)
  3. COMPUTERISED BALLOTING
- The new tie-breaker based on school choice order recognises the different considerations that families have in making school choices.

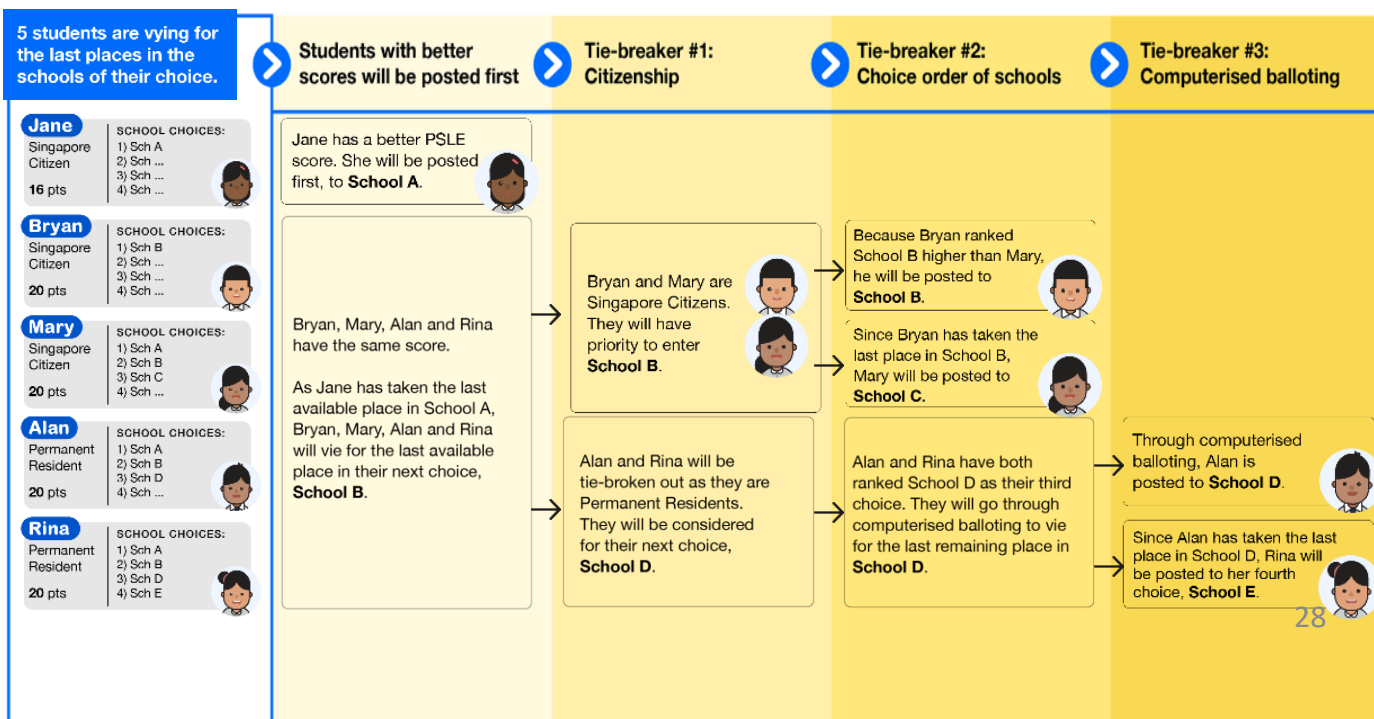


# Tie-breakers

in the new S1 Posting System

Tie-breakers are used only if there are two or more students with the same PSLE Score vying for the last available place(s) in a school.

Here's a simplified example.





# School-Home Partnership

Every Parent a supportive Partner



# Conclusion

Wishing you and your child a safe and wonderful year filled with joy and growth ahead!

