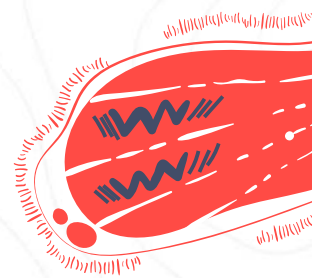




# EL Department

P4 Parent Teacher Meeting 2022  
28 January



# EL Department Vision

**Passionate  
learners**



**effective and  
responsible  
users**  
of English Language

**at work and play**



## Passionate Learners

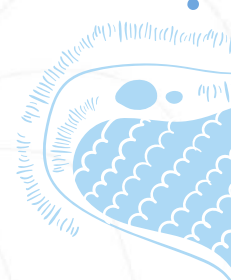
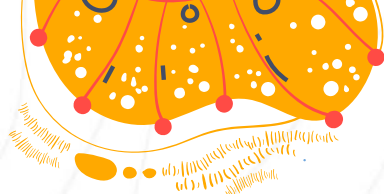
- Self-directed in improving one's command of the language
- Explore and evaluate real-world issues and multiple perspectives to co-create knowledge and solutions in familiar or new contexts

## Effective Users of EL

- Possess values, dispositions and skills to listen to different perspectives
- Communicate confidently, effectively and sensitively while collaborating with others to work towards shared goals

## Responsible Users of EL

- Possess broad worldviews by staying well informed and self-directed in the use of information
- Able to evaluate information, critically and with discernment according to purpose, audience, context and culture



# Areas of Language Learning

01

Listening and  
Viewing

02

Reading and  
Viewing

03

Speaking and  
Representing

04

Writing and  
Representing

05

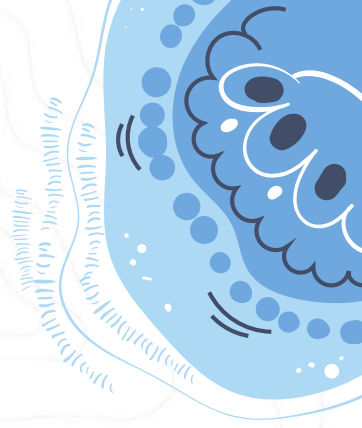
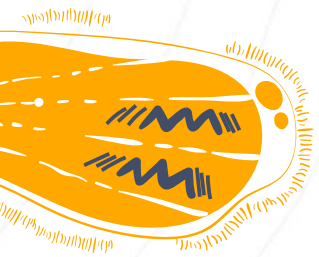
Grammar

06

Vocabulary



# Key Programmes for Primary 4:



Straight from  
the Heart

Thinking C.A.P.

Impromptu  
Speaking

Bilingual  
Reading  
Programme

EL Reading  
Programme

CW Group  
Discussion and  
Presentation

School Library  
Events

# Platforms for Checking Learning at Primary 4

## Listening

Listening  
Comprehension  
Sessions

## Reading

Reading Aloud

## Speaking

Oral Practices

Group / Class  
Presentations

Impromptu  
Speaking

## Writing

Spelling

Continuous  
Writing

# EL Paper Components (P4)

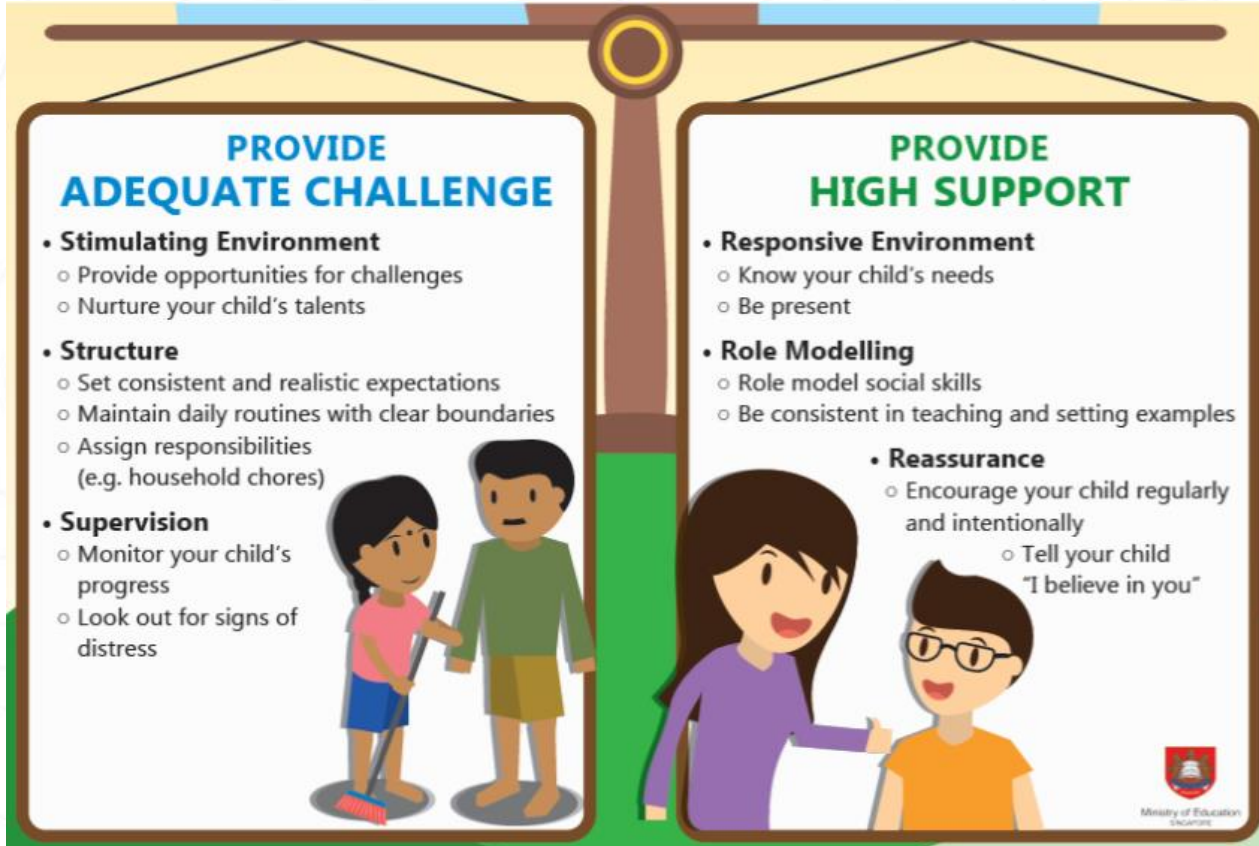
PAPER	COMPONENT	CONTENT	WEIGHTING
1 (50 min)	Composition	Continuous Writing	20%
2 (1h 15 min)	Language Use and Comprehension	Grammar	50%
		Vocabulary	
		Grammar Cloze	
		Passage 2	
		Compre Cloze	
		Synthesis & Transformation	
		Comprehension: Passage A	
		Comprehension: Passage B	
		3 (40 min)	
4	Oral	Reading Aloud	16%
		Stimulus-based Conversation	
Total:			100%

# Developing Strong Home-School Partnership






# Working Hand-in-Hand



The infographic is presented as a balance scale with a central vertical beam. The left pan is labeled 'PROVIDE ADEQUATE CHALLENGE' in blue text and contains a list of three bullet points: 'Stimulating Environment', 'Structure', and 'Supervision'. Below the text is an illustration of a boy and a girl standing on a platform, with the girl holding a broom. The right pan is labeled 'PROVIDE HIGH SUPPORT' in green text and contains a list of three bullet points: 'Responsive Environment', 'Role Modelling', and 'Reassurance'. Below the text is an illustration of a woman and a boy standing on a platform, with the woman placing her hand on the boy's shoulder. The background of the infographic is yellow with a green base. The entire graphic is set against a white background with faint, stylized cloud patterns. There are decorative elements in the corners: a pink leafy branch in the top left, a red circular pattern in the top right, and a blue abstract shape in the bottom left.


## PROVIDE ADEQUATE CHALLENGE

- **Stimulating Environment**
  - Provide opportunities for challenges
  - Nurture your child's talents
- **Structure**
  - Set consistent and realistic expectations
  - Maintain daily routines with clear boundaries
  - Assign responsibilities (e.g. household chores)
- **Supervision**
  - Monitor your child's progress
  - Look out for signs of distress



## PROVIDE HIGH SUPPORT

- **Responsive Environment**
  - Know your child's needs
  - Be present
- **Role Modelling**
  - Role model social skills
  - Be consistent in teaching and setting examples
- **Reassurance**
  - Encourage your child regularly and intentionally
    - Tell your child "I believe in you"

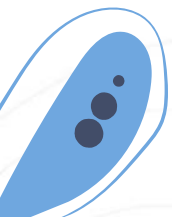


Ministry of Education  
Singapore



# Suggestions on How You Can Help



- **Read** to and with your child (different genres)
    - Go to the library together
    - Allow for personal choice
    -
  - Go through your child's **files and books** (when they are returned for signature)
    - Remind your child to do corrections
    - Monitor penmanship of your child
- 



# Suggestions on How You Can Help



- **Play** language games, e.g. Scrabble Junior, Bananagrams, Apple to Apple
  - Encourage your child to give his/her views and opinions **respectfully** during conversations
  - Provide attention to **non-written homework** (for e.g. Speech and Drama – praise effort)
- 