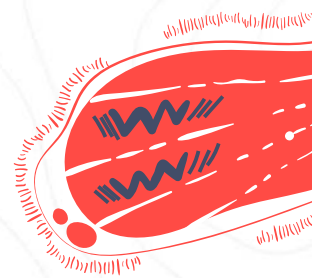




EL Department

P3 Parent Teacher Meeting 2022
11 February



EL Department Vision

**Passionate
learners**



**effective and
responsible
users**
of English Language

at work and play



Passionate Learners

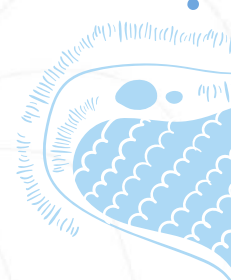
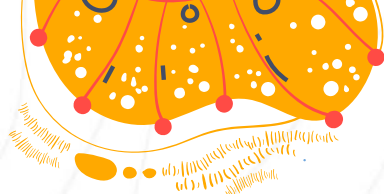
- Self-directed in improving one's command of the language
- Explore and evaluate real-world issues and multiple perspectives to co-create knowledge and solutions in familiar or new contexts

Effective Users of EL

- Possess values, dispositions and skills to listen to different perspectives
- Communicate confidently, effectively and sensitively while collaborating with others to work towards shared goals

Responsible Users of EL

- Possess broad worldviews by staying well informed and self-directed in the use of information
- Able to evaluate information, critically and with discernment according to purpose, audience, context and culture



Areas of Language Learning

01

Listening and
Viewing

02

Reading and
Viewing

03

Speaking and
Representing

04

Writing and
Representing

05

Grammar

06

Vocabulary



Key Programmes for Primary 3:



Straight from
the Heart

Speech and
Drama



Bilingual
Reading
Programme

EL Reading
Programme

CW Group
Discussion and
Presentation

School Library
Events

Platforms for Checking Learning at Primary 3

Listening

Listening
Comprehension
Sessions

Reading

Reading Aloud

Speaking

Oral Practices

Speech and
Drama

Writing

Spelling

Continuous
Writing

Penmanship

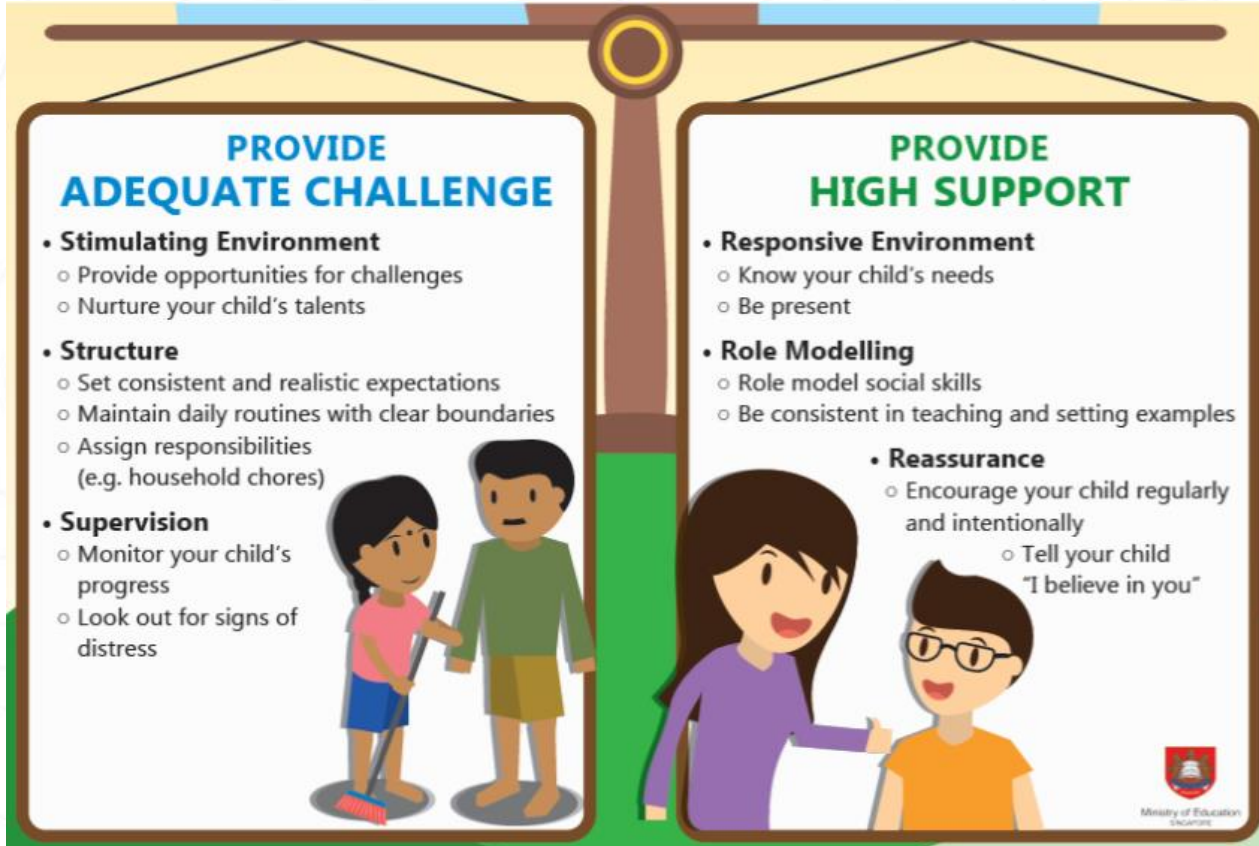
EL Weighted Assessment 2022

Term	WEIGHTING
1	10%
2	15%
3	10%
4	65%
SA2: All Components	

Developing Strong Home-School Partnership




Working Hand-in-Hand



The infographic is presented as a balance scale with a central fulcrum. The left pan is labeled 'PROVIDE ADEQUATE CHALLENGE' and the right pan is labeled 'PROVIDE HIGH SUPPORT'. Both pans are filled with text and illustrations. The left pan is slightly higher, while the right pan is slightly lower, suggesting a balance between the two concepts. The background features decorative elements: a pink leafy branch in the top left, a red circular pattern in the top right, and a blue abstract shape in the bottom left.


PROVIDE ADEQUATE CHALLENGE

- **Stimulating Environment**
 - Provide opportunities for challenges
 - Nurture your child's talents
- **Structure**
 - Set consistent and realistic expectations
 - Maintain daily routines with clear boundaries
 - Assign responsibilities (e.g. household chores)
- **Supervision**
 - Monitor your child's progress
 - Look out for signs of distress



PROVIDE HIGH SUPPORT

- **Responsive Environment**
 - Know your child's needs
 - Be present
- **Role Modelling**
 - Role model social skills
 - Be consistent in teaching and setting examples
- **Reassurance**
 - Encourage your child regularly and intentionally
 - Tell your child "I believe in you"

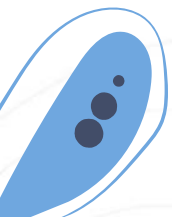


Ministry of Education
Singapore



Suggestions on How You Can Help



- **Read** to and with your child (different genres)
 - Go to the library together
 - Allow for personal choice
 -
 - Go through your child's **files and books** (when they are returned for signature)
 - Remind your child to do corrections
 - Monitor penmanship of your child
- 



Suggestions on How You Can Help



- **Play** language games, e.g. Scrabble Junior, Bananagrams, Apple to Apple
 - Encourage your child to give his/her views and opinions **respectfully** during conversations
 - Provide attention to **non-written homework** (for e.g. Speech and Drama – praise effort)
- 