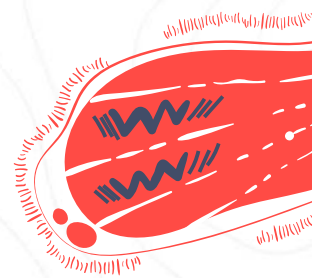




EL Department

P2 Parent Teacher Meeting 2022
18 February



EL Department Vision

**Passionate
learners**



**effective and
responsible
users**
of English Language

at work and play



Passionate Learners

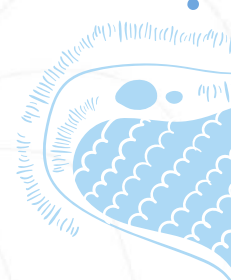
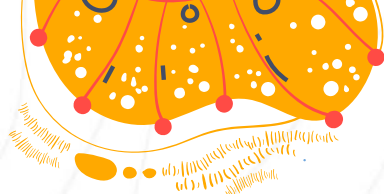
- Self-directed in improving one's command of the language
- Explore and evaluate real-world issues and multiple perspectives to co-create knowledge and solutions in familiar or new contexts

Effective Users of EL

- Possess values, dispositions and skills to listen to different perspectives
- Communicate confidently, effectively and sensitively while collaborating with others to work towards shared goals

Responsible Users of EL

- Possess broad worldviews by staying well informed and self-directed in the use of information
- Able to evaluate information, critically and with discernment according to purpose, audience, context and culture



Areas of Language Learning

01

Listening and
Viewing

02

Reading and
Viewing

03

Speaking and
Representing

04

Writing and
Representing

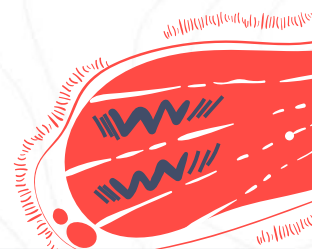
05

Grammar

06

Vocabulary





Learning Outcomes (P2)

Listening

Listen attentively and identify relevant information

Reading

Read multi-syllabic words accurately.

Read aloud Primary 2 texts (e.g. STELLAR texts) with accuracy, fluency and expression.

Understand Primary 2 texts (e.g. STELLAR texts) and are able to identify the big ideas in the texts and recall.



Learning Outcomes (P2)

Speaking

Build on others' ideas in the conversations or discussions respectfully.

Speak clearly to express their thoughts, feelings and ideas.

Writing

Apply basic spelling strategies using knowledge about phonic elements and spelling rules.

Write short paragraphs to recount appropriately sequenced events, describe details, and use tenses and connectors accurately.

Platforms for Checking Learning at Primary 2

Listening

Listening
Comprehension
Sessions

Reading

Reading Aloud

Book Talk

Speaking

Book Talk
Discussion

Pick-and-Tell

Writing

Spelling

Continuous
Writing

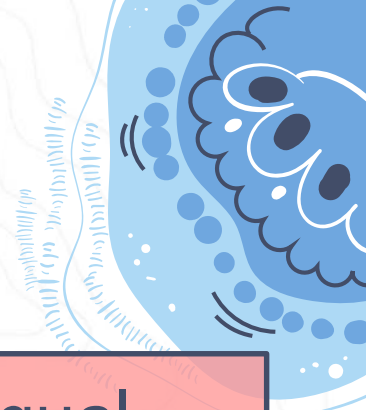
Penmanship

Key Programmes for Primary 2:



Straight from
the Heart

Differentiated
Focus Lessons
(DFLs)



Bilingual
Reading
Programme



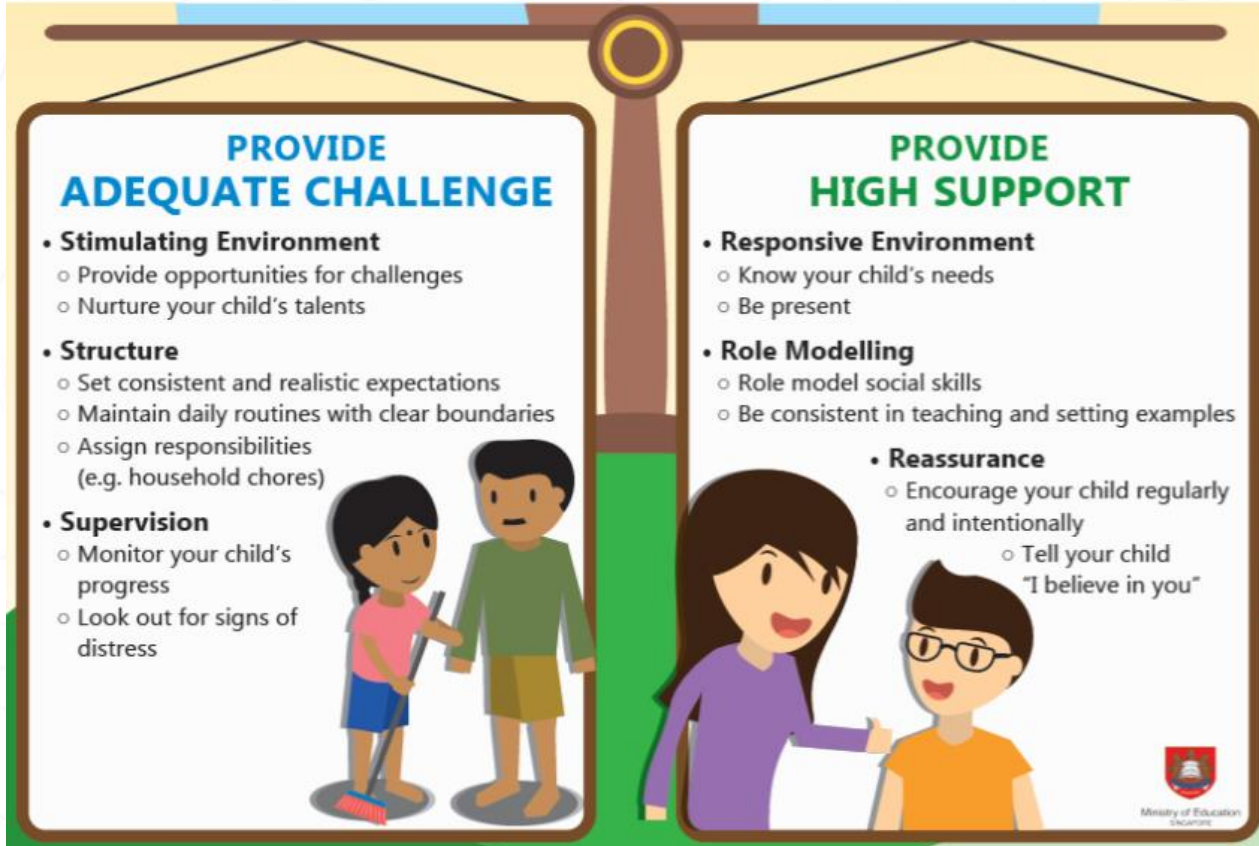
EL Reading
Programme

School Library
Events

Developing Strong Home-School Partnership




Working Hand-in-Hand



The infographic is presented as a balance scale with a central vertical beam. The left pan is labeled 'PROVIDE ADEQUATE CHALLENGE' in blue text and contains a list of three bullet points: 'Stimulating Environment', 'Structure', and 'Supervision'. Below the text is an illustration of a boy and a girl standing on a platform, with the girl holding a broom. The right pan is labeled 'PROVIDE HIGH SUPPORT' in green text and contains a list of three bullet points: 'Responsive Environment', 'Role Modelling', and 'Reassurance'. Below the text is an illustration of a woman and a boy standing on a platform, with the woman placing a hand on the boy's shoulder. The background of the infographic is yellow with a blue horizontal bar at the top. The entire graphic is set against a white background with faint, stylized wavy lines. There are decorative elements in the corners: a pink leafy branch in the top left, a red circular pattern in the top right, and a blue abstract shape in the bottom left.


PROVIDE ADEQUATE CHALLENGE

- **Stimulating Environment**
 - Provide opportunities for challenges
 - Nurture your child's talents
- **Structure**
 - Set consistent and realistic expectations
 - Maintain daily routines with clear boundaries
 - Assign responsibilities (e.g. household chores)
- **Supervision**
 - Monitor your child's progress
 - Look out for signs of distress



PROVIDE HIGH SUPPORT

- **Responsive Environment**
 - Know your child's needs
 - Be present
- **Role Modelling**
 - Role model social skills
 - Be consistent in teaching and setting examples
- **Reassurance**
 - Encourage your child regularly and intentionally
 - Tell your child "I believe in you"

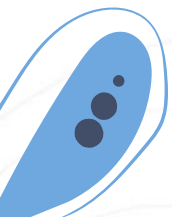


Ministry of Education
Singapore



Suggestions on How You Can Help



- **Read** to and with your child (different genres)
 - Go to the library together
 - Allow for personal choice
 -
 - Go through your child's **files and books** (when they are returned for signature)
 - Remind your child to do corrections
 - Monitor penmanship of your child
- 



Suggestions on How You Can Help



- **Play** language games, e.g. Scrabble Junior, Bananagrams, Apple to Apple
 - Encourage your child to give his/her views and opinions **respectfully** during conversations
 - Provide attention to **non-written homework** (for e.g. Speech and Drama – praise effort)
- 