

The background is a light pink color with various decorative elements. At the top, there are yellow curved shapes resembling a sun or clouds. Scattered around are colorful puzzle pieces in orange, red, blue, and yellow. Two children are illustrated: a boy on the left with dark skin, black hair, wearing a yellow shirt and blue pants, and a girl on the right with light skin, black hair, wearing a white shirt with a red collar and blue shorts. Both children are smiling and appear to be running or jumping. A large white speech bubble is in the center, containing the main text.

RMPS

Primary 4 Parents' Briefing

28 January 2022



All slides will be uploaded on the school's website



01

Vice Principal's
Address
School's Direction &
Assessment Matters

02





Year Head's
Address
Level Programmes

03

Academic
Heads' Address
Curriculum Matters

04

Meeting the
Form Teachers
Class Focus & Expectations



01

Principal's Address



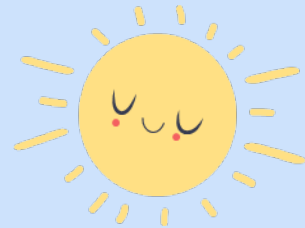
02

Year Head's Address



Expectations

1. Respect and Graciousness: In words and actions
2. Responsibility
3. Punctuality: Be in classroom by 7.40 am
4. Attendance: Every Day Matters



Start Right

- We set clear expectations for students.
- Ask your children about the Start Right rules for classrooms, hallways and recess.



Holistic Education

Discover and nurture their strengths and interest, cultivate important values, and realise their potential to seize opportunities of the future



Physical

- Olympic Festival
- P4 Camp
- CCA

Cognitive

- Straight from the Heart
- MT Fortnight
- Experiential Learning



Social & Moral

- Character Workshop
- Growth Mindset
- Make-a-Mark
- NE Commemorations




Aesthetics

- Music– Garageband
- Art Museum-Based Learning
- RMPS Got Talent

Health & Safety

- Road Safety Talks
- Health Talks & Checks
- Fire/ Lockdown Drills

Multi -Disciplinary

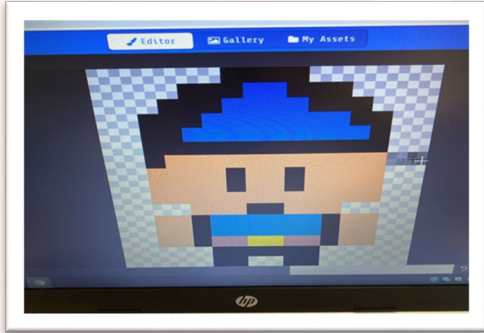
- Multi -Disciplinary Project Work (MDPW)
 - STEAM Week
- 

The background is a light pink color with large, soft, wavy shapes in shades of pink and yellow. In the center is a large white cloud-like shape containing the text. Various colorful icons are scattered around: a red car at the top, puzzle pieces in red, yellow, blue, and orange, a blue ball on the left, and two hands at the bottom. One hand is red with a white smiley face on the palm, and the other is orange with a red smiley face on the palm.

Primary 4

Key Programmes

Multi -Disciplinary Project Work (MDPW)

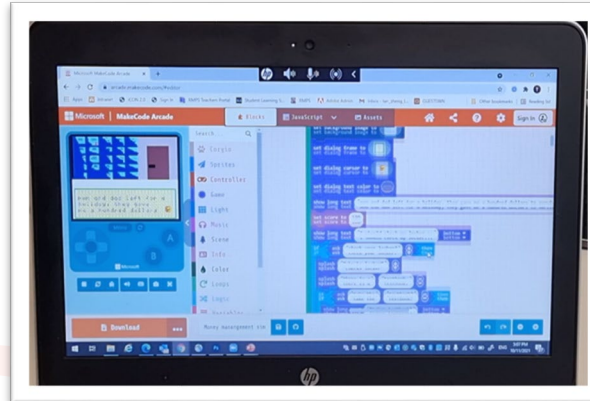


Design
Thinking

Critical &
Inventive
thinking



Creative
solutions



Applied Learning Programme (ALP)



- Embark on 6 year progressive Computational Thinking integrated with Design Thinking curriculum
- Exposed to real world problems
- Design Thinking Process



Arts Festival

Physical & Aesthetics



Art
Museum-Based
Learning





P4 Camp

Build resilience
and confidence

Basic first aid
and navigation skills

Teamwork



Olympics Festival



Social & Moral



Circle Time



Breakfast with Form Teachers

Foster well-being in our students and develop positive relationships through engaging and meaningful conversations .

School -Based Character & Citizenship Education Programmes



Build confidence in students' self -image through building of life skills and Social Emotional Competencies

FriYAY@RMPS



Focus on strengthening bonds and building friendships through play (7.15am to 7.40am)

- Educational games like Chess, Rubik cube, Traffic Rush, Boggle, Scrabble, Othello, Reversi

Annex D2: DOs and DON'Ts for the examinations

To ensure that your responses are captured or read clearly during marking, you should take note of the following Dos and Don'ts:

DOs

OPTICAL ANSWER SHEETS (OAS)

- ✓ Use a 2B pencil to shade the ovals.
- ✓ Shade the oval completely.
- ✓ Erase completely your wrongly shaded ovals or any unnecessary marks.



ANSWER BOOKLET / ANSWER SHEET FOR WRITTEN PAPERS

- ✓ Use a 2B pencil to shade your multiple-choice questions (MCQ) ovals.
- ✓ Write your answers clearly with a blue or black ballpoint pen with 0.5mm tip size within the writing space provided.
- ✓ Cancel your errors made by crossing out your wrong word / sentence clearly.
- ✓ Erase completely your wrongly shaded MCQ ovals or any unnecessary marks outside the provided writing space.

DON'Ts



- ✗ **DON'T** write your answers with pencil.
- ✗ **DON'T** use correction fluid or correction tape to avoid smudges.
- ✗ **DON'T** crumple, fold, tear, wet or damage your OAS, answer booklet/ answer sheet in any way.
- ✗ **DON'T** use a highlighter to highlight any part of your answer.
- ✗ **DON'T** make any unnecessary markings (e.g. write, draw, shade, etc) on any part of the OAS / answer booklet / answer sheet, other than on the ovals / writing space provided.
- ✗ **DON'T** deface (e.g. shade, colour, write, etc) the barcodes, QR Codes and skunk marks printed on the OAS / answer booklet / answer sheet.

Thank you!

Year Head(Middle Primary):
Mdm Wong Pauline (Mrs Toh)

Email Address:
pauline_wong@schools.gov.sg

CREDITS: This presentation template was created by
Slidesgo , including icons by **Flaticon** , and infographics
& images by **Freepik**

Academic Heads' Address



Form Teachers' Session

